



The Sugar Lake News

MAY 2021

**Sugar Lake Association
Minnesota Waters' 2010 Lake Association of the Year
2009 Star Lake Recipient**

2021

CALENDAR OF EVENTS

Planned 2021 Dates

May 20-SLA Meeting*

June 17- SLA Meeting*

July 15-SLA Meeting*

August 19-Annual Meeting/
Board Election*

September 16- SLA Meeting*

October 21-SLA Meeting*

*Meeting Day & Time Changed
SLA meetings have been changed to
Thursday at 6:30 p.m.*

June and August are
membership meetings

We are meeting in-person at the Corinna township hall. We will also have a zoom virtual option for those of you that cannot meet in-person. We will practice social distancing with masks per the state and township rules.

*SLA meetings are held at the Corinna Township hall at
6:30 p.m.

Send Newsletter submissions to:
Don Peterson

E-mail don@sugarlake.org

For membership,
address, e-mail, or property owner
changes contact :
E-mail membership@sugarlake.org



Sugar Lake Loons

We all love to see and hear the loons on Sugar Lake. Here are a couple great photos taken by Mark Snyder.

Thanks for sharing with us Mark!



Sugar Lake Loon twins. This was taken between sunset point and bell point May 23.

The latest lake report

By Dan Erdmann

Water physical condition a 2 on 1 (good) to 5 (poor) scale.

Date	Clarity	Water Temp	Air Temp	Culvert	
				Inlet	Outlet
05-16-12	11'	65°	75°	22.5"	28"
05-25-13	11'	56°	58°	18.5"	23.5"
05-23-14	9.5'	48°	49°	24.25"	28.25"
05-17-15	9.0'	60°	67°	20.50"	23.00"
05-20-16	12.0'	64°	70°	22.00"	27.00"
05-19-17	9.0'	58°	55°	20.50"	25.50"
05-19-18	8.0'	65°	72°	16.16"	22.00"
05-17-19	9.0'	60°	71°	22.00"	27.00"
05-16-20	10.0'	56°	66°	16.25"	21.50"
05-22-21	17.0'	66°	79°	19.25"	24.75"

Historical, 100 year, ordinary high water mark is 15-1/2"

Membership

If you know someone new in your area that might be interested in becoming a member of the SLA, notify Membership at the email listed below. Notify us of any changes to the directory information including address or phone changes. Contact membership by email at: membership@sugarlake.org.

Treasurer's Report

As of March 31, 2021

General Fund	\$63,773.03
Lake Improvement Fund	\$51,564.38
Milfoil and Invasive Species Fund	\$154,936.38
Total All Funds	\$270,273.79

2021 Events

Virtual Fishing Fun Event

Saturday, June 26 (8 am to noon)

Boat Parade Saturday, July 10 (3 to 4 pm)

Scramble Golf Event Saturday, July 31

Southbrook Golf Course (1 pm Shotgun Start)

Picnic Saturday, August 7

Rachel Property (Noon to 3)

New Sugar Lake Apparel will be available at the picnic this year

Light Up the Lake, Saturday, September 4

Township News

Corinna Township Town Board meetings are held the first and third Tuesday of every month at 7 p.m. The Corinna Town Hall is located on Ireland Ave, 1/3 mile north of County Road 39.

Clerk: Mary Barkley Brown 320-274-8049

- Visit the Corinna Township website at www.corinnatownship.com.
- Junk Clean Up Day scheduled for July. See website for details.

Clearwater Township Town Board meetings are held the third Tuesday of every month at 7:30 p.m. The Clearwater Town Hall is located on Highway 24, 3-1/2 miles south of Clearwater.

Clerk: Jean Just —Town Hall Phone: 320-558-6790

- Visit the Clearwater Township website at www.clearwatertownshipmn.govoffice2.com.

Advertising

You will note the addition of ads in this newsletter. The advertisers shown in these pages are supporting Sugar Lake. Ads will be printed in the newsletter, the new directory out this year, and Facebook. Please support our advertisers as they are supporting us.

Membership and Fundraising

Association dues are required to be paid before June 1 to reserve your place in this year's new Sugar Lake Directory. All current SLA members receive a directory with valuable lake information. The directory is published every two years.

Sugar Lake is a wonderful place to cherish, and even more so in these difficult times. We recognize these are challenging times for many families and if you need to defer some of your dues or donations we understand. Sugar Lake Association is thankful for your donations and appreciates your support to help us to continue to preserve this great place for our community.

To make giving easier, we have an online donation capability on our web site.

Please visit www.sugarlake.org and click on the link to make your donation today.

If you prefer, donations may also be mailed to:

Sugar Lake Association, P.O. Box 373, Annandale MN 55302

Sugar Lake Association Annual Membership \$50.00

Please pay your dues by June 1 to ensure your spot in the updated SLA directory.

Please consider extra donations. Over 50% of SLA members make extra donations

Buy an Acre for \$300 helps us combat invasive species or any extra donation amount is greatly appreciated.

We look forward to seeing you on the lake this again.

Thank you for your support. Your friends and neighbors on Sugar Lake.

Sugar Lake May fishing news

By Kevin Welle

This year we had a picture-perfect fishing opener weekend, with a mix of clouds and sun, although the walleye chop was not cooperating the fish sure were for many anglers. We had a very good turnout of anglers out at the break of dawn and throughout the day, with a few boats out at the stroke of midnight opening morning. Surface water temperature opening morning was 55°F. Water clarity is at an all-time high making it much more efficient to use the darker color jigs instead of the brighter ones to attract the big one. Get out there and try your luck, and remember our annual fishing contest will be held June 26th

Scott Radtke recently caught this 30 inch Walleye in 6 feet of water with a jig and gulp minnow. Join Sugar Lake Spirt face book group and get all the Sugar Lake news real-time.



Sugar Lake Benefit Golf Outing

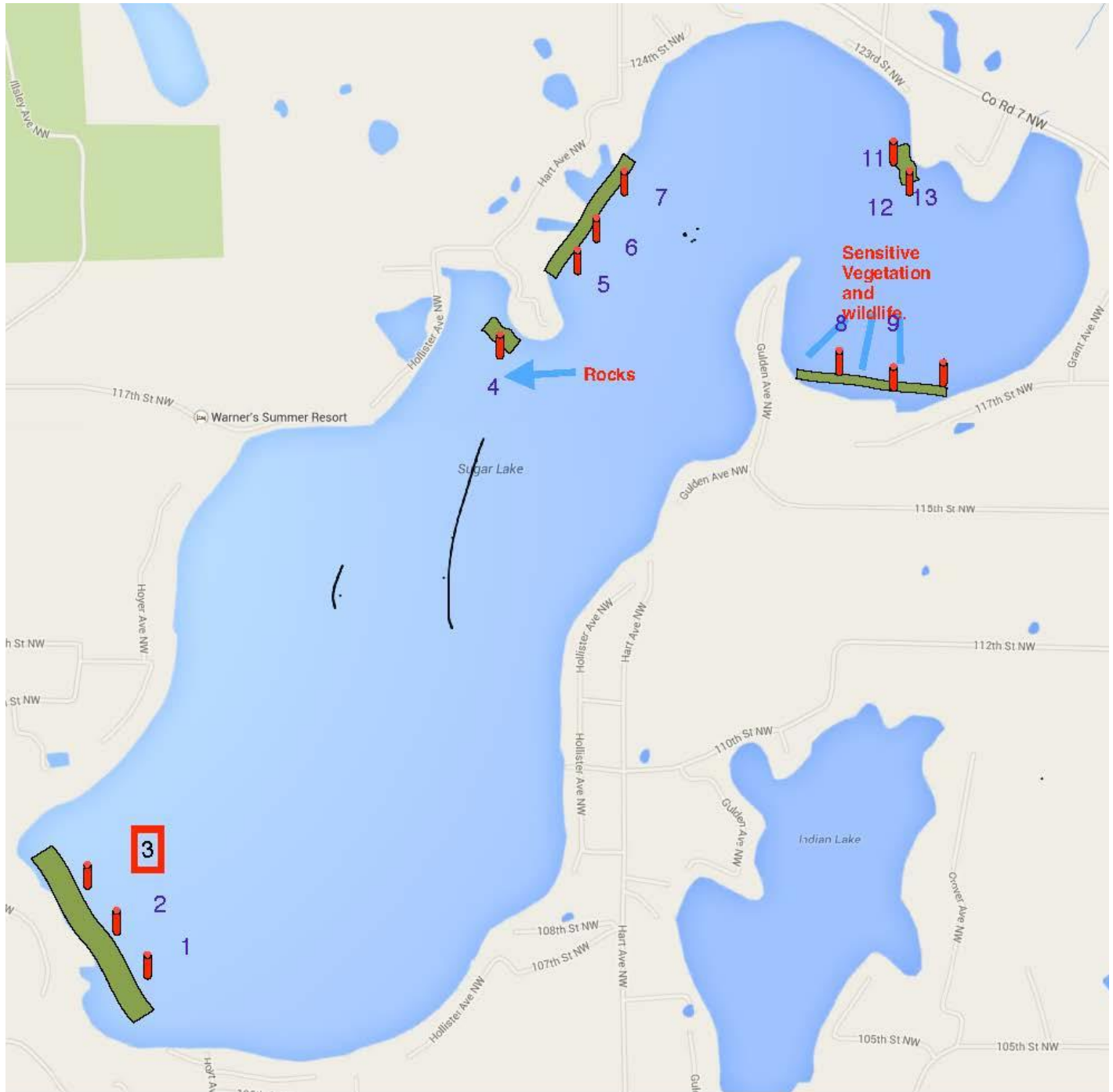
Save the Date

The Sugar Lake Association will be holding a golf outing at Southbrook Golf Club in Annandale on Saturday, July 31, with a 1:00 p.m. shot-gun start. The "tournament" will have a scramble format, so non-golfers are encouraged to participate for loads of fun. Supper will follow. Invite your wives, husbands, kids, families, and friends for an afternoon of fun. Prize donations and hole sponsorships are welcome.

For more information, or to sign up, contact Greg Selle at 612-719-1824 or gselle4844@gmail.com.

New Buoys in Place

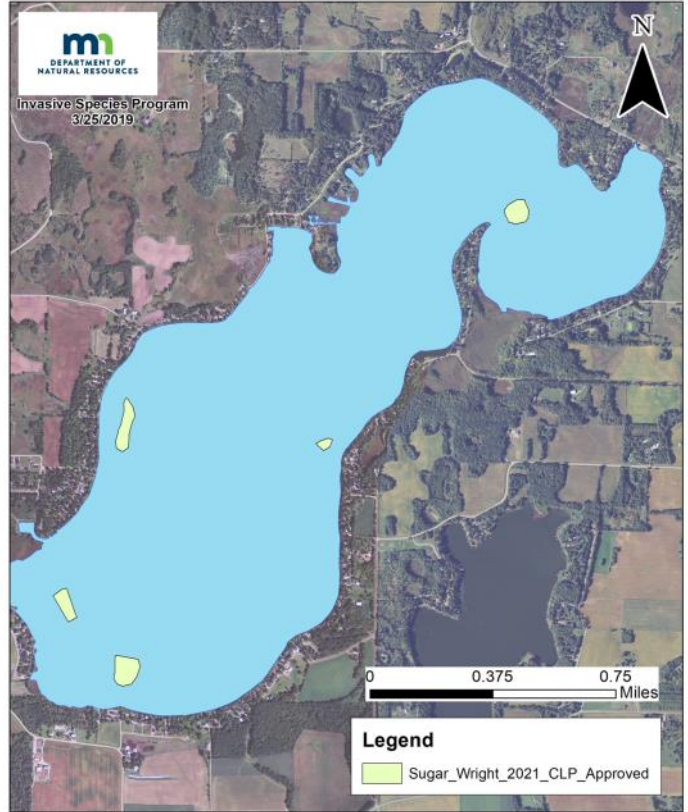
Eleven new buoys were purchased and have been placed on the lake. Thanks to Dan Erdmann, Mark Ertl, Dale Gustafson, and Buck Klobe for helping assemble the buoys. They were installed by Keith Theisen and EZLIFT. Please steer clear of the areas marked when you are out boating.



Vegetation

The SLA DNR permit for the treatment of curly leaf pondweed was approved. Lake restoration completed treatment of the marked areas on the map shown to the right May 19. The cost to treat will be approximately the \$15k that was budgeted for this year. Every area that was requested to treat was approved.

Treatment notice was sent out and posted May 10.



Sugar Lake, Wright County, (DOW #86023300)
2021 Approved Curly-leaf pondweed Treatment (12.8 acres)



*Luxurious, upscale apartment living
can be yours at
Pleasant Vista in Annandale.*

- *Stainless appliances*In unit washer/dryer
- *Granite countertops*Patios and balconies
- *underground heated parking
- *On campus Wellness Center with swimming pool
- *Access to Assisted Living Services

Opening Fall of 2021.
Now taking reservations

Call 320-274 5031 for more information
www.pleasantvistaseniorliving.org



*World Class Products,
Exceptional Service*
www.anchor-dock.com

**ANCHOR
DOCK & LIFT**

(320) 274-6500

North Landing Update

The Sugar Lake Association escalated the safety issues at the north access to the DNR and Wright County this spring. The north landing has had issues for many years, but has recently deteriorated with many pot holes and the steep grade to exit/enter has become a significant safety concern. The DNR has no intent to close north landing, but the DNR and Wright County are working to improve the safety concerns. The DNR responded with the following letter and has taken steps to implement temporary repairs. The DNR and Wright County are collaborating on plans to resolve the steep grade and exploring improved warning signage. The SLA will keep you informed as the safety improvements are hopefully implemented over the next year.

May 7, 2021

Keith Theisen
Chair Sugar Lake Association Board of Directors
Email: KeithKTheisen@aol.com

Re: Safety Concerns with North Landing on Sugar Lake

Dear Mr. Theisen,

Since April, the DNR has been actively working with Wright County on a plan to improve the Sugar Lake (N) Public Water Access. Both short term solutions and long term solutions have been discussed. Safety of both those using the public water access and the roadway are important to us.

The short term solution will involve 2 steps. The first step involved some immediate attention to the driveway approach this week. Using a combination of Class 5 aggregate and crushed concrete, our DNR staff hauled, spread and compacted material to temporarily address the broken asphalt and potholes. This will be monitored as we proceed with the 2nd step. For this and for the summer of 2021, the DNR will plan to have the old blacktop removed and add material to ensure that the driveway area and approach is firmer and more stable. Wright County will review signage from the road to determine if additional signage or stencils would increase safety.

The long term solution will be more involved and will not be implemented until 2022. Wright County has agreed to create plan sheets for the access that specify grades and materials needed. This is to ensure that three critical needs of the site are met. The first is to elevate the driveway to ensure a safer entry and exit for all vehicles. Second is to review the boat ramp placement which needs to be a specific slope to function properly to ensure launching boats is not compromised. Since the current public water access ramp is due for replacement, this will provide an opportunity to design accordingly with respect to the parking lot, the approach, the boat ramp, and transition. Third is to ensure that storm water runoff from the road and parking area drain properly and do not cause erosion or sedimentation of Sugar Lake. Ultimately, we want to ensure the work and design is done right and not hastily.

Minnesota Department of Natural Resources
1035 South Benton Drive, Sauk Rapids, MN 56379

DEPARTMENT OF u NATURAL RESOURCES

MINNESOTA DEPARTMENT OF NATURAL RESOURCES
Division of Parks and Trails 1035 South
Benton Drive Sauk Rapids, MN 56379
Telephone 320-223-7878

Both the DNR and Wright County have agreed to share costs on both the short term and long term solutions. The DNR is willing to move and replace the boat ramp and Wright County is willing to design and both are willing to provide funding for material and equipment.

Regards,



Tim Edgeton
DNR Area Supervisor, Parks and Trails Division

Sugar Lake Association Board Nominations

Are you interested in becoming a Sugar Lake Association board member? Do you know someone who may be interested in the position or you believe would be a good board member, please contact

Don Peterson

don@sugarlakemn.net

Or

Keith Theisen

Keithktheisen@aol.com

The nominating committee would like to have a slate of candidates ready before our June meeting. Our eighteen-member board administers the SLA. Each board member serves for 3 years and then is required to take a year off before being eligible to be elected again. Board members can serve on committees including water quality, vegetation, education, fisheries, communication as well as helping with annual events like the picnic. It is a great way to learn about the lake and be involved in what is happening.

Current Board Members

Terms expiring August 31, 2021

Steve Kowalczyk

Diane Hall

Mike Emerson

Mark Snyder

Mark Ertl

Dan Salfer

Scott Radkte*

*Past Chair position

Terms expiring August 31, 2022

Don Peterson

Mark Kraemer

Keith Theisen

Rob Gusaas

Tom Nimmo

Terms expiring August 31, 2023

Kim Hanson

Trudy Richter

Todd Jackson

Lisa Salfer

Kevin Welle

Jim Printup



Rory Norgren

Cell: 320.980.1166
Office: 320.274.5884

werace@lakedalelink.net
16628 45th St. N.W. Annandale MN.

Fishing For A Buyer?

I'll help you land the BIG ONE!

952-381-4343

Lisa
SALFER
REALTOR®, GRI



Your Realtor on the lake.

www.lisasalfer.edinarealty.com

Edina Realty
a Berkshire Hathaway affiliate



BRONDER

CONSTRUCTION

NEW CONSTRUCTION • REMODELING
GENERAL CONTRACTING

320.282.3042

Chair's Corner

At the May SLA board meeting the Starry Stonewort Rapid Response Plan was discussed and reviewed with board members. Starry Stonewort (SSW) is a dangerous invasive species, a free-floating algae, not a rooted plant. It is also quite virulent; current thought being that only a single piece of Starry can infect a whole lake. Starry was discovered in Lake Sylvia a few years ago and we learned a number of important lessons from their experience. Early detection is critical and rapid treatment needed to contain the spread. SLA employs Bluewater Science to look for any signs of Starry every month in the summer and fall. Please be on the look out for any signs of Starry Stonewort. <https://www.dnr.state.mn.us/invasives/aquaticplants/starrystonewort/index.html>. Please notify SLA if you identify suspicious vegetation vegetation@sugarlake.org. In 2017, SLA developed and adopted a Starry Stonewort Rapid Response Plan with assistance from the DNR and our treatment partners. Treatment for Starry Stonewort can be very expensive; fortunately due to your donations SLA has dollars in the invasive species fund available for rapid treatment. Hopefully, we will not need the Starry Stonewort Rapid Response Plan, but we are ready.

Nick Hadfield the SLA Vice Chair has resigned from the SLA board. Don Peterson was appointed to fill the open seat and Don was also elected as the new Vice Chair. The SLA Board approved proposed by-law changes at the May meeting. These by-law changes will be communicated to membership in June with a membership vote for adoption in August.

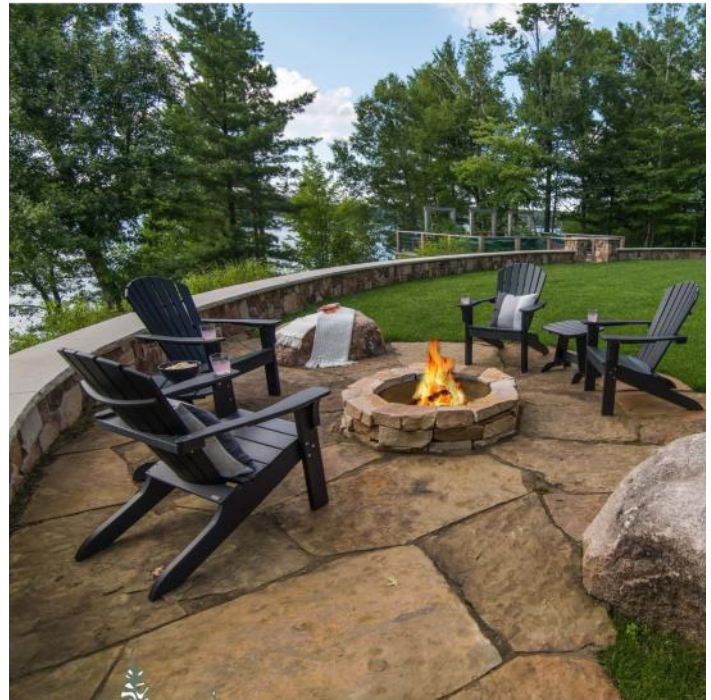
Thank you,
Keith Theisen
SLA Chair.



Rory Norgren

Cell: 320.980.1166
Office: 320.274.5884

werace@lakedalelink.net
16628 45th St. NW. Annandale MN.



**BACKYARD
REFLECTIONS**

320-274-6336 WWW.BACKYARDMN.COM ANNANDALE/NISSWA

Waterfront • Residential • Acreage




Seagraves
Edina Realty

Rick Seagraves
-Realtor-

www.soldwithrick.com **320-282-5656**

Connect with the Sugar Lake Association

Sugar Lake Rummage Sale Group

To support our informal buying and selling of items around the lake and to have this activity be self-supporting, we established a closed group on Facebook called the Sugar Lake Rummage Sale. This is a closed group so only those that request access will be admitted and only see posts once access is gained.

Here is what you need to know:

If you don't have a Facebook account, you will need to get one or use a family member's account.

Log into Facebook

- In the search bar at the top of your Facebook page type Sugar Lake Rummage Sale
- A white banner menu bar will appear at the top, under the Facebook search bar, click on *Groups*
- You should see the Sugar Lake Rummage Sale
- Click "Join"
- Your request will be sent to the Admin and you will be added to the group.

Sugar Lake website

For the latest news on Sugar Lake visit our website:

www.sugarlake.org

News Flash

The Sugar Lake Association maintains an email list for communication with membership:

News Flash: This list is used to send information about invasive species treatment, event announcements, member information, government information, etc. To subscribe to this list send an e-mail to membership@sugarlake.org requesting addition.

If you wish to unsubscribe follow the instructions in the email you receive from the list or send an email requesting removal to the addresses listed above.

For the latest news on Sugar Lake visit our website:

www.sugarlake.org

Facebook

Visit our Sugar Lake Facebook Group

Sugar Lake Spirit change on Facebook

A new Facebook Group Page with the same name we used before, Sugar Lake Spirit, has been set up.

There is a new Facebook Group for those who live on, enjoy and care about Sugar Lake in Annandale MN. Please like this group and share with others who would like to post photos, news, and events about Sugar lake. We are moving from a Facebook Community page to a new Group page! Any questions contact Jan Tift at jantift@gmail.com.

Nextdoor

Sign in or sign up for the Sugar Lake neighborhood on Nextdoor:

https://nextdoor.com/events/3647049?init_source=copy_link_share

Personal Watercraft

It is a good time to review the Minnesota Personal Watercraft Laws. Here are some excerpts from the MN DNR pamphlet.

LAWS

Every personal watercraft operator has the legal responsibility to know the law, so please take a few minutes to review the following regulations.

WHAT IS A PERSONAL WATERCRAFT?

A personal watercraft (sometimes called PWC or by brand names such as Jet Ski, Wave Runner, Sea Doo, etc.) is defined by law as a motorboat powered by an inboard motor powering a jet pump or by an outboard or propeller driven motor and is designed to be operated by a person sitting, standing or kneeling on the craft, rather than in the conventional manner of sitting or standing inside a motorboat.

Personal watercraft are considered motorboats under the law so they must follow all the regulations that govern other motorboats.

In addition, personal watercraft. . .

- Are required to have a rules decal (provided at no charge by the DNR) in full view of the operator.
- Operators and passengers
- must wear a U.S. Coast Guard approved Type I, II, III, or V personal flotation device (life vest).
- Are required to carry a USCG approved fire extinguisher.
- Must travel at slow-no wake speed (5 mph or less) within 150 feet of: shore (except when a PWC is launching or landing a water skier by the most direct route to open water), docks, swimmers, swimming rafts, any moored or anchored watercraft, or non-motorized watercraft.
- While towing a person on water skis or other device, must have an additional person on board to act as observer. Wide-angle rearview mirrors may be substituted for an observer but they must be factory-installed or specified by the PWC manufacturer.
- *The Wright County ordinance in effect on Sugar Lake states:*
No person shall operate a watercraft on the public waters of this county while towing any person on water skis, water tube, aqua plane, surfboard, saucer, or similar device on a federal holiday, on Saturday or Sunday or in a congested area at any time unless another person is on the watercraft and in a position to continually observe the person being towed.
- Cutoff lanyards must be properly used and attached to the person, life vest or clothing of the operator.
- May only operate between 9:30 a.m. and one hour before sunset (click the link below for a sunrise-sunset schedule).

<https://sunrisesunset.willyweather.com/mn/wright-county/silver-creek.html>

You may not . . .

- Chase or harass wildlife.
- Operate while facing backward.
- Operate in a way that endangers life, limb or property.
- Operate a personal watercraft if the spring-loaded throttle mechanism has been removed or tampered with so it interferes with the return-to-idle system.
- Weave through congested watercraft traffic or jump the wake of another watercraft within 150 feet of the other boat.
- Travel through emergent or floating vegetation at greater than a slow-no wake speed.

AGE RESTRICTIONS FOR PERSONAL WATERCRAFT

Contact the MN DNR for home-study materials for a youth watercraft operator's permit.

It is unlawful for a PWC owner to permit its operation in violation of the age restrictions.

Less than 13 years old

May not operate, even with an adult on board.

13 years old

Must either have:

someone at least 21 on board, or a watercraft operator's permit and be in continuous visual observation by someone at least 21.

14-17 years old

Must either have:

a watercraft operator's permit,

or

someone at least 21 on board.

USE SOUND JUDGMENT

- **Keep the neighborhood peace and quiet in mind.** Try not to ride for long periods in a small area. Instead, do your riding out in the lake and away from shore and other boaters.
- **Talk to your neighbors.** See if your riding bothers them. Sometimes, just taking them out for a short ride will help them understand the fun of personal watercraft riding.
- **Don't modify your machine or do anything to make it louder.** It's illegal and discourteous to others around the lake.
- **Steer clear of illegal drugs and alcohol.** Intoxicated operation of a watercraft is not only illegal, it's also highly dangerous.

We Sell & Install Hardwood, Carpet, Laminate, Tile, Showers & More!
 Free In-home Consultations & Estimates!



SAVE UP TO 50% OFF
 ON YOUR NEXT FLOORING PROJECT!

We buy direct from manufacturers & pass the savings on to you! **LARGEST** Wood selection in the area

Our Service & Quality will FLOOR you

Visit our showroom, available by appointment
 Call Brady 612-812-8588 or e-mail brady@cornerstonefloordesign.com

www.cornerstonefloordesign.com



SOUTHBROOK GOLF COURSE
GOLFER SPECIAL!

WILD Wednesday 18 HOLES W/CART Only \$22	 Southbrook Golf Course IN ANNANDALE 320-274-2341 511 Morrison Ave. S., Annandale, MN Conveniently located between Annandale and Lake John on Cty Rd 183	AFTER 5 P.M. EVERYDAY! 9 HOLES W/CART Only \$13
Thurs. Senior Day (Over 55) 18 HOLES W/CART Only \$27		Twilight Golf 18 HOLES W/CART Only \$26

WWW.SOUTHBROOKGOLF.COM



Serving the Heart ^{OF THE} *Lakes*
 since 1974!




OAK REALTY

OAK REALTY LLP
 offices in
 ANNANDALE & MAPLE LAKE
 320.274.5737 | 320.963.2088
 WWW.OAKREALTYMN.COM

find us on 

Trusted by Generations



QUALITY ON-SITE REPAIR
FRIENDLY SERVICE
EXCEPTIONAL JEWELRY

Miller's Jewelry

Est. 1892

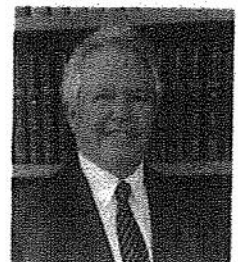
DOWNTOWN ANNANDALE

tel (320) 274-5313

WWW.MILLERS-JEWELRY.COM



Matthew Brown



Sheldon Brown

Young & Brown, LLC

Lawyers for Lake People

Wills

Trusts

Estates

Real Estate

Boundary Issues

For Sale by Owner

"Before You Sign"

Call 320-274-8221

Annandalelaw.com



PeakSprayFoamLLC.com

612-562-7823

**Spray Foam • Air Barrier • Waterproofing
Insulation • Home Energy Consulting**