



The Sugar Lake News

JULY 2020

2020

CALENDAR OF EVENTS

Planned 2020 Dates

August 15-Annual Meeting/
Board Election*

September 19- SLA Meeting*

October 17-SLA Meeting*

November 21-SLA Meeting*

It is unknown at this date which of any meetings listed will be in person. Newsflash notices will be sent prior to the meeting dates.

*SLA meetings are held at the Corinna Township hall at 8:00 a.m. September, October & November meetings at 9 a.m.

Send Newsletter submissions to:
Don Peterson

E-mail don@sugarlake.org

For membership, address, e-mail, or property owner changes contact :

E-mail membership@sugarlake.org

Boat Parade

On Saturday, August 1, SLA will be sponsoring a boat parade instead of our usual picnic. Start planning now with your families for how you will be decorating your boat or pontoon. We are disappointed that we cannot gather and enjoy one another's company at the picnic, but we're looking forward to seeing everyone at a safe distance out on the lake in their decked-out boats on August 1.

Please sign up with the number of people on your boat including who participated in decorating and your theme if possible.

Date: 08/01/2020 (Sat.)

Time: 1:00pm - 2:00pm CDT

Sign up with Sign Up Genius by clicking the link below:

<https://www.signupgenius.com/go/70a0d49aeab2aaa8-2020>

There is no fee to enter!

- You will receive a number via email. Make a large sign of the number to place on the Starboard (Shore) side of your Boat
- Have your boat ready at the South Landing at 1 pm. You do not need to line up in numerical order. Just have your number visible
- There will be judges around the lake so make sure that you go counter clockwise from the landing and include the north bay.

If you need a little inspiration

1977 Boat Parade

Pictured here are
Scott & Marc Radtke,
Donny & Jay Wood



Winners from the 2001 boat parade



The latest lake report

By Dan Erdmann

The physical condition was 2 on a scale of 1 (good) to 5 (poor).

Date	Clarity	Water Temp	Air Temp	Culvert	
				Inlet	Outlet
07-19-13	13'	83°	74°	17"	22"
07-16-14	15'	74°	70°	21.5"	26.5"
07-17-15	13'	80°	78°	20.25"	25.25"
07-15-16	9'	76°	74°	22.25"	26.25"
07-14-17	12'	76°	73°	16.50"	21.50"
07-21-18	11'	80°	76°	14.50"	20.00"
07-11-19	11'	79°	77°	23.75"	28.75"
07-13-20	16'	75°	80°	15.75"	21.75"

Most think the water level is low but DNR says the historical 100 year average high water mark is 15 1/2" in the culvert.

Membership

If you know someone new in your area that might be interested in becoming a member of the SLA, notify Membership at the email listed below. Notify us of any changes to the directory information including address or phone changes. Contact membership by email at:

sugarlakemember@gmail.com

Treasurer's Report

As of June 30, 2020

General Fund	\$58,468.85
Lake Improvement Fund	\$49,831.50
Milfoil and Invasive Species Fund	\$137,191.84
Total All Funds	\$245,492.19

Raffle tickets

SLA will also be holding the usual picnic raffle this year, but with the drawing taking place virtually via Facebook, live on August 1 at 4:00 pm. As usual, you need not be present – or, for this year, on Facebook – to win. You should have received your 5 raffle tickets in the mail. The raffle is an important fundraiser for SLA and we appreciate your support. **Please return your completed tickets along with a check made payable to SLA for the total payment in the return envelope provided. Please ensure they are mailed in time to be received no later than July 29 to ensure your tickets make it into the drawing.** If you would like additional raffle tickets, please send a request to:

sugarlakemember@gmail.com.

Township News

Corinna Township Town Board meetings are held the first and third Tuesdays of every month at 7 p.m. The Corinna Town Hall is located on Ireland Ave, 1/3 mile north of County Road 39.

Clerk: Mary Barkley Brown 320-274-8049

- Visit the Corinna Township website at www.corinnatownship.com.

Clearwater Township Town Board meetings are held the third Tuesday of every month at 7:30 p.m. The Clearwater Town Hall is located on Highway 24, 3-1/2 miles south of Clearwater.

Clerk: Jean Just —Town Hall Phone: 320-558-6790

- Visit the Clearwater Township website at www.clearwatertownshipmn.govoffice2.com.

Annual Meeting and Board Election

August 15 is our annual meeting and board election. This year the election will be electronic with an option to request a paper ballot. Notice will be sent early August.

Volunteer help wanted

The Sugar Lake Association needs your help.

We are looking for help to update, re-design, and maintain our website. If you are interested in helping with this please contact Scott Radtke at

scott.c.radtke@gmail.com

Light Up the Lake

There will be no contest and no restriction on the type of lights.

Please continue to participate by lighting up your shore with luminaries, campfires, electric lights, torches, etc.

The date of this event is Saturday evening of Labor Day Weekend, September 5, 2020.

Proceed counter clockwise around the lake to avoid congestion and view what others have done. We ask owners of swim rafts to bring them in or light them in some way to avoid accidents.

Participate, view, and enjoy the evening.

The article below, written by Doc Williams in the July 2007 newsletter, provides some history of Sugar Lake Lights Night.

Diane's Lights Night

By Doc Williams

In 1995, Diane Radtke was visiting with a friend from another lake. This friend told Diane of a beautiful thing that she and her neighbors would do. On a particular evening, several neighbors would put luminaries on their dock to help set the mood for an area party. After contemplating this for a while, Diane thought, wouldn't it be grand if it could be done on a lake wide scale. On Labor Day weekend of 1996 the first "Sugar Lake Lights Night" took place, and Diane promoted the event until she lost her battle with cancer in 2000. During an SLA meeting that year, Dick Choate proposed a resolution that the Lights Night name be changed to "Diane's Lights Night" in honor of its founder. The resolution passed unanimously and this year will be the 11th celebration of Diane's idea. Why not be a part of this gala event and make our lake glow like the jewel that is. Every lake shore owner is invited to make a display of their choosing, from luminaries, or any flame lit display, on Saturday of Labor Day weekend. See you on the lake.



Chair's Corner

What a wild year it has been as Chair of the SLA Board. As I end my term, I want to thank all the Board members and Association members for your support and understanding in this very trying year. The good news is that all of you have continued to support our efforts to maintain the water quality of the lake, you have participated in our events even through social distancing restrictions, and your financial contributions have allowed us to maintain a healthy balance sheet which will allow us to react to AIS and most other threats that the lake may encounter moving forward.

The battles we still face from AIS will continue for the years to come. It is important that all of us do our part in slowing the spread of this through proper care of boats and water equipment as we move these items to and from the waters. According to MN DNR less than 3% of MN waters have Zebra Mussels, lets do our part in not spreading this scourge.

I encourage everyone to volunteer to serve on the SLA Board in the future, for me it has been a very educational and uplifting experience. There are numerous passionate people giving their time to keep this going but new people are always welcome and needed. From my experience I hope to serve in some capacity for years to come and I hope that many others take up this charge and engage. I look forward to participating and seeing many of you in the Boat Parade on August 1st.

Stay safe and healthy

Scott Radtke
SLA Chair

Connect with the Sugar Lake Association

Sugar Lake Rummage Sale Group

To support our informal buying and selling of items around the lake and to have this activity be self-supporting, we established a closed group on Facebook called the Sugar Lake Rummage Sale. This is a closed group so only those that request access will be admitted and only see posts once access is gained.

Here is what you need to know:

If you don't have a Facebook account, you will need to get one or use a family member's account.

Log into Facebook

- In the search bar at the top of your Facebook page type Sugar Lake Rummage Sale
- A white banner menu bar will appear at the top, under the Facebook search bar, click on *Groups*
- You should see the Sugar Lake Rummage Sale
- Click "Join"
- Your request will be sent to the Admin and you will be added to the group.

Sugar Lake website

For the latest news on Sugar Lake visit our website:

www.sugarlake.org

News Flash

The Sugar Lake Association maintains an email list for communication with membership:

News Flash: This list is used to send information about invasive species treatment, event announcements, member information, government information, etc. To subscribe to this list send an e-mail to membership@sugarlake.org requesting addition.

If you wish to unsubscribe follow the instructions in the email you receive from the list or send an email requesting removal to the addresses listed above.

For the latest news on Sugar Lake visit our website:

www.sugarlake.org

Facebook

Visit our Sugar Lake Facebook Group

Sugar Lake Spirit change on Facebook

A new Facebook Group Page with the same name we used before, Sugar Lake Spirit, has been set up.

There is a new Facebook Group for those who live on, enjoy and care about Sugar Lake in Annandale MN. Please like this group and share with others who would like to post photos, news, and events about Sugar lake. We are moving from a Facebook Community page to a new Group page! Any questions contact Jan Tift at jantift@gmail.com.

Nextdoor

Sign in or sign up for the Sugar Lake neighborhood on Nextdoor:

https://nextdoor.com/events/3647049?init_source=copy_link_share

Sugar Lake History

Here are three articles from past newsletters about Area C. The first, *Elaine Beach*, is from the April 2007 newsletter.



ELAINE BEACH (Area C)

Written by Elaine Beise Fox

In 1927 my Grandfather, W. C. Beise of Lester Prairie, MN, purchased 411 feet of shoreline on the north shore of Sugar Lake. In 1930 the property was platted and named “Elaine Beach,” named after the youngest child. The property was divided into six lots, five sold to owners which remain within the same families.

The mothers and kids spent most of the summer at the lake, and the dads arrived for the weekends. Activities were plentiful.

Kids spent many days rowing to “The Point” in a flat bottom wooden boat – of course no life jackets, what were they!!? A lunch was packed, and time was spent looking for Indian artifacts— few were ever found. We were gone most of the day which left time for the women to get a Bridge game going.

Many times we would pack a lunch and walk into Silver Creek for an ice-cream cone. This, too, was an all day trip. Kids would often gather corn silk, dry it on top of the 3 holer, and roll it into cigarettes. This was then smoked— shocking visiting Lester Prairie guests.

Ice for the icebox was secured from Hierholzer’s. We would take an old wooden wagon to the ice house, and for 10 cents buy a chunk.



**Beise and Heneman families.
Taken in the mid 30s**

Weekends might include pancake breakfasts, corn roasts, fish fries, pot luck dinners, and softball games. Highway 7 was located north of the present road. In the drought years this left a meadow in which the ball games were played. An annual “snipe hunt” was held to welcome all newcomers to the Beach.

Ella Beise taught most of the kids to swim and dive. Swimming to “The Point.” by age 12 was the goal. Development of “The Point” began in the ‘50’s and from then on became “Bell Point.” This tradition still prevails. On reaching The Point, Lund’s Bell is rung, answered by ringing the “Elaine Beach” Bell. This is followed by a big ovation of assembled beachers on their return. The Beises were square dancers and entertained their group at the cabin each summer. One dance in the lake was always included. Once accomplished, the dancers were then named a Mud Hen by Cliff.

Elaine Beise Fox and husband Jim, married 60 years, live in Waseca, MN. In 1988 they purchased the Beise cabin from the Ella Beise estate. The Fox children and families continue the fun times and traditions on Elaine Beach.



**View south from Elaine beach.
Also taken in the mid 30s**

Sugar Lake History

Here are three articles from past newsletters about Area C.

The second, *80th Reunion for Gambles*, is from the August 2008 newsletter.

The third, *More Area Highlights*, is also from the August 2008 newsletter.



Area Highlights By Trudy Richter

80th Reunion for Gambles

The Gamble family celebrated its 80th with a Gamble Cottage reunion August 1-3, 2008. Over 60 relatives attended and reminisced on the “good times.” This year the “second generation” was represented by members of the family, Chuck Gamble and Ross Gamble, both 80 years old. The cottage was built on Elaine Beach in 1928 by three doctors, Will, Ross, and Paul Gamble who practiced medicine in Albert Lea, Minnesota. They set up a clinic in Albert Lea after completing medical school with the support of the Mayo brothers. Their father, a Baptist minister, had died while preaching one Sunday morning and the three men were fortunate enough to get the support of the Mayo brothers who gave them summer jobs and otherwise helped them through medical school.

From the beginning, the doctors and their families rotated months sharing the summers at the cottage. One year a family would have June, the following year July and so on. This practice continues today with family coming from Louisiana and California, Arkansas and Texas, as well as those still in Minnesota. Tragically, all three doctors died very young but the wives, Isabel, Peg, and Jeanne, continued the annual trips to the lake for the kids (second generation) and grandkids (third generation). Now there is the 4th and 5th generations who were present at the reunion, including the smallest, 5th generation member, Tess Gasteazoro, at 6 months. Over the years, favorite activities included swimming to the point and ringing the bell. The tradition started with the doctors saying no one could take out a boat alone unless they could swim that distance, the assumption being no point on the lake would be further than that length for swimming. To this day, family members enjoy the swim, some even going round trip. Fishing has always been the main attraction for certain members and others just enjoy the lake breezes, reading, eating sweet corn and raspberries. The family reunions started 30 years ago and take place every 5 years.

More Area Highlights

By Jean Bachmeier Heberle

We of Elaine Beach on the North end have a tradition that our grandkids are embracing with enthusiasm: to swim, accompanied by row boat but unassisted by boat or flotation gear, to "the point," a distance of about a third to a half mile, by age 12. On August 1, two of our grandsons, Jacob Wolf, 11, and brother Nolan Wolf, 8, made the swim in spite of a stiff wind that arose when they were half way, making for choppy water. If unchallenged, Nolan hopes he is the youngest to have reached the point and ring the bell.

The six cottages of Elaine Beach are still owned by the kids/grandkids of the original owners who bought the property in the 1920's and 1930's. However, there were no homes on Sunset Point when the first swimmers made the crossing. Nevertheless, this tradition is now stronger than ever!

We would love to hear from others who have similar lake traditions.

Sugar Lake Discharge Culvert History

The lake level readings reported by Dan Erdmann every month are taken at the discharge culvert at the north end of Sugar Lake. The culvert was replaced August 4, 1986 and reported on in detail in the June 1987 newsletter. The scanned article below is from the June 1987 Sugar Lake News. This replacement didn't happen out of the blue. Starting in 1984, following some preliminary work by others, Wally Olson was given the green light by the SLA Board to start discussions with the DNR, Wright County, and downstream landowners. In recent years there had been high water levels resulting in shoreline property damage. The negotiations to replace the culvert were no small task involving public input, MN DNR, and Wright County. A group of SLA members lobbied to install a larger 48 inch culvert. A larger culvert would have required more studies, approvals, and money. Wally Olson followed through and the new culvert as described below was installed.

It wouldn't be right to talk about lake level readings without mentioning Jim Kastl. Jim reported lake level and water quality readings from 1974 though October of 2009. He was recognized numerous times for his continuing service by the MPCA and a grateful Sugar Lake Association.

CULVERT, Wally Olson

The hot and dry weather we have experienced this spring is the major factor contributing to the moderate lowering of Sugar Lake water level. Some recent readings produced the following results:

<u>Date</u>	<u>New Culvert Level</u>	<u>Old Culvert</u>
May 30, 1987	17 inches	25 inches
June 6, 1987	15 3/4 inches	23 3/4 inches
June 19, 1987	15 inches	23 inches

As every interested person knows, the Wright County Highway Department installed a new outlet culvert under County Highway 7 at the North end of the lake last August 14th. This was done as a part of their routine maintenance program wherein they attempted to replace deteriorating culverts which have been in service for many decades. The old outlet culvert was installed in 1935. It had heaved in such a manner

over the years that the outlet side was 8 inches higher than the inlet side resulting in inadequate drainage and extensive shore line damage. Also, many culvert sections had spread apart causing concern that the road bed was gradually falling into the culvert and thus leaving a hollow dome under the road surface. It was feared that if this was the case, the road might collapse under the weight of a truck.

Again, as every interested person knows, the State of Minnesota Department of Natural Resources has to approve any proposal that could possibly affect the water level of any lake in the state. In the case of the proposal to replace the Sugar Lake outlet, several studies were made and hearings were held. As a result, the DNR ordered the Wright County Highway Department to do the following:

1. Install a new culvert of the same 36" diameter as the old culvert.
2. Install the inlet side of the culvert 8" higher than the old culvert inlet in order to comply with the DNR's arbitrary high water level for Sugar Lake, and
3. Provide a 5 1/4" fall from the inlet and to the outlet end to ensure efficient flowage.

The new culvert is 88 feet long and has a 36 inch diameter. The day after it was installed the water level reading was 24 inches (equal to 32 inches with the old culvert). In spite of the installation of the new culvert, the ice caused permasive shoreline damage around the lake because of the inordinately high lake level. It is also noted we can lose one inch of water in two days of HOT weather.

Lake Vegetation Report

As we feel the heat of this summer we can see the vegetation continue to grow, and the water level seems to keep getting lower and lower. This makes both our docks appear higher and the vegetation taller, so we are cutting more vegetation with our boats. The new boats we see now seem to be getting bigger. The bottom line is that as we get more visitors to our lake and we enjoy more time on the water, we simply cut more vegetation around the lake. So, as you see the clumps of vegetation drift in toward your docks, lifts, and places we swim, we should pick them up and place them on our docks. I leave mine on the dock for a day or so. They get very light as the water drains out and the leaves get dry. At that time it is easy to pick them up and dispose of them by composting the piles or taking them to a Township and adding them to the pile.

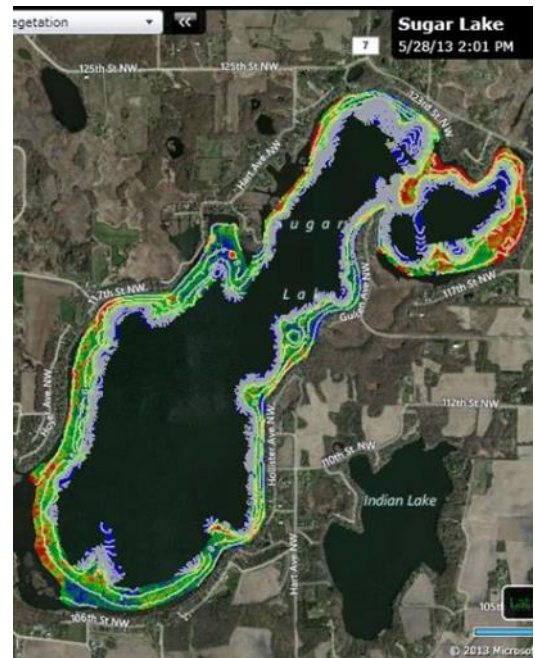
The vegetation that floats around the lake is not good for the lake. As it decays, it releases nutrients that will provide conditions for more algae to grow and plants of all kinds to grow thicker in the water. It is our hope that the map below will give you information about areas where we should avoid. Of course, we need to come and go as we enjoy water activities. There are a couple of easy things we can do: drive your boat in and out from the shallow water to the open water in the same path each time. Also, if you keep out of the mapped areas while you pull people around the lake or drive around the lake for an evening boat trip, adjust your path to stay out of the 10 feet or less areas. We have had lots of time this spring and summer to boat through the shallows, but we should do all we can for the rest of the summer.

Vegetation Map

The map to the right was developed by Dale Gustafson and Dan Erdmann in 2013. It clearly shows the areas we should steer clear of this time of the year to avoid cutting vegetation with our props. We should attempt to stay in water that is 10 feet deep.

Here is the text that accompanied the map in 2013:

The above map is an accumulation of 24 different mapping trips on the lake. We only covered the shoreline areas out to a depth of about 25 feet. The green color represents moderate density of vegetation and the red areas represents more dense areas. As we scan in the shallower areas we see more red because even a foot or two of vegetation creates a high density percentage in that shallow water. The dark red spots in the deeper water represent a lot more plants than the shallow red areas. Also, some of these survey trips were taken earlier than others and the density had not developed as much.



AIS CONTROL

This is a good report to give about Curly leaf pondweed (CLP) and Eurasian water milfoil (EWM). During the last time the Blue Water Science crew searched Sugar Lake they reported that the amounts of these two invasive plants were not dense enough to warrant treatment at this time. Instead we have the areas of minimum growth well mapped and they will be checked when the crew returns to look for Starry stonewort (SSW). They will continue looking for SSW every month until close to freeze-up.

Something we will be asking you to do this fall when closing up is to clean off any ZM (Zebra Mussels) on all of your water equipment. Please send information about what you find on your equipment to Zebra@sugarlake.org. We want to keep a basic inventory of where the ZM is the most populated. This may help us in the future when we are able to treat to reduce the density. I am sorry I can't tell you we have a control at this time, but I am sure that in the future we will have something we can do to defeat Zebra mussels. Enjoy seeing the bottom of the lake! Has anyone been scuba diving and can share what they've seen?

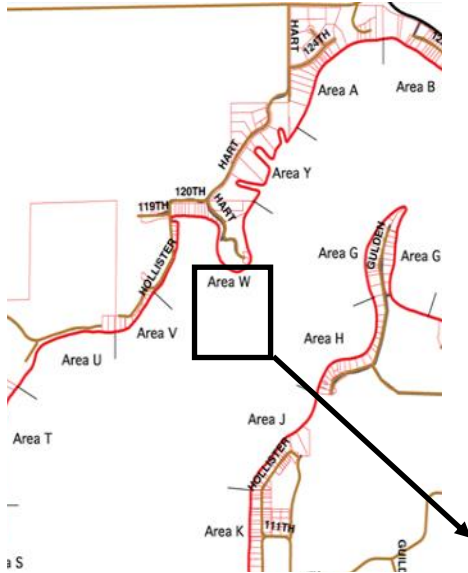
Please share this information to keep our lake healthy.

Vegetation Committee

Dale Gustafson

Buoys

Thanks to Mark Snyder for another drone picture. This is a great picture of the area known as “Rocky Point”. Buoys mark the extent of the rocks. The comments below are by Mark.

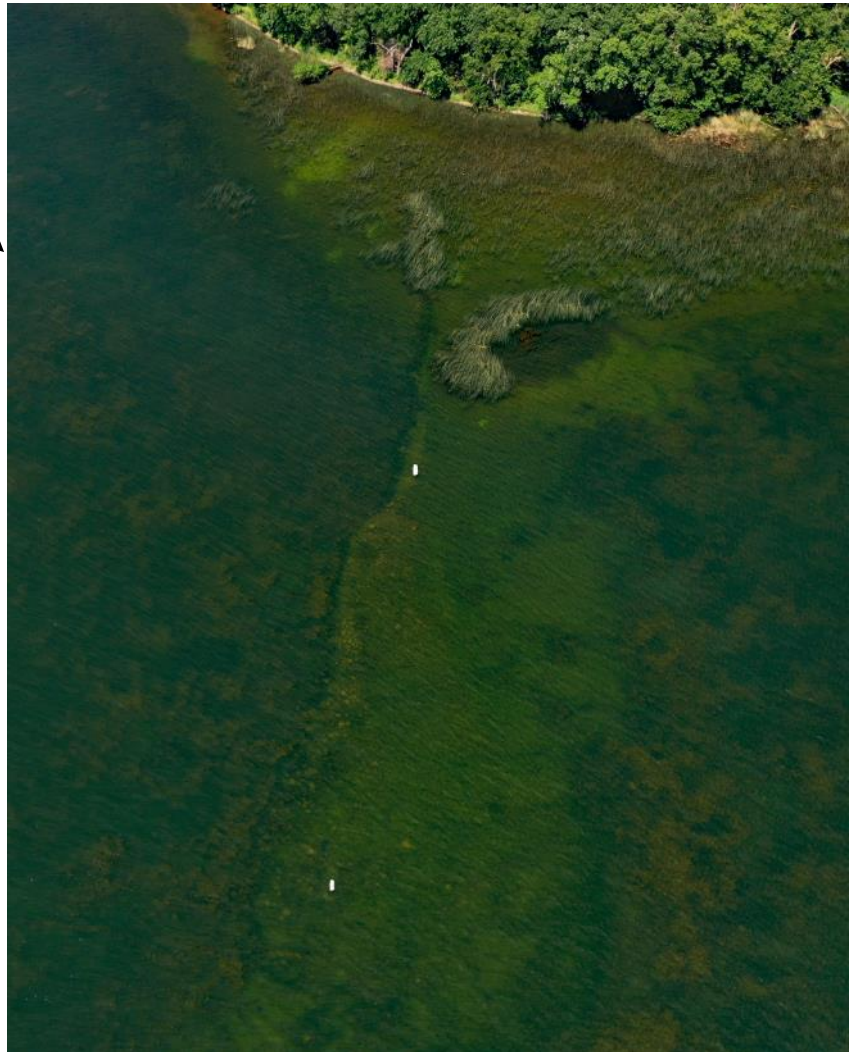


Here is “Rocky Point”, next to Addison Bay.

Looking Down.

The rocks are much more apparent from this photo.

And many of these rocks are 3’ or less below the water surface, all the way to the south buoy, as many of you know.



Have you ever boated through Rocky Point before realizing how shallow these rocks are?

.....I have.



ADDRESS SERVICE REQUESTED

The Sugar Lake Association
The Sugar Lake News
PO Box 373
Amandale, MN 55302

