



# The Sugar Lake News

**JULY 2013**

2013

## CALENDAR OF EVENTS

July 27—Golf Benefit

August 3-SLA Picnic

August 3-Fireworks

August 17-Annual Meeting/  
Board Election\*

August 24—Wine & Gardens

August 31-Diane's Lights Night

August 31-Brandon Beckman 5K

September 21- SLA Meeting\*

October 19-SLA Meeting\*

\*SLA meetings are held at the Corinna  
Township hall at 8:00 a.m.  
March, September & October meet-  
ings at 9 a.m.

**Send Newsletter submissions to:**  
Don Peterson

319 Wayside Rd W

Hopkins, MN 55343

Home 952-939-0172

Work 952-361-3026

E-mail [don@sugarlake.org](mailto:don@sugarlake.org)

**For membership, address, e-mail,  
or property owner changes**  
contact Marianne Borgeson at

12282 Hart Ave NW

Annandale, MN 55302

320-963-2674

E-mail [membership@sugarlake.org](mailto:membership@sugarlake.org)

## Annual Picnic

It is annual picnic time! Come out and enjoy the day with your friends, family, and neighbors from around the lake. Check in at the membership table for your name tag and raffle entry. Enjoy the great food, drinks, kids' games, educational opportunities, and annual raffle.



**Date:** Saturday, August 3

**Place:** Enghausers, SE corner of the lake.

### Schedule of events :

8 a.m.	Setup
12 noon	Picnic starts
1 to 3 p.m.	Kids' games
3 p.m.	Raffle and door prize drawings

Food will be served all afternoon until it is gone.

- *Please clean up after yourself, and be sure you don't leave anything behind on the grounds.*
- *Please note that registration and a name tag will be required for food and drink. Please register as soon as you arrive.*
- *Please leave your dogs at home.*
- *If you are bringing extra guests consider making a donation to help cover the cost.*
- *Anyone under 40 should be prepared to show ID for beer or wine service.*

Help is still needed to support the games.

Please donate an hour of your time at the picnic to help make it a success for everyone.

If you can help please contact:

Deb Beltrand 952-944-1526

email: [dbeltrand@comcast.net](mailto:dbeltrand@comcast.net)

If you, or someone you know, are interested in donating prizes for the picnic

please contact :

Mike Mengelkoch

320-963-8518

Email: [mengemrm@comcast.net](mailto:mengemrm@comcast.net)

## The latest lake report

By Dan Erdmann

The physical condition was 2 on a scale of 1 (good) to 5 (poor).

Date	Clarity	Water Temp	Air Temp	Culvert	
				Inlet	Outlet
07-17-07	11'	78°	85°	16"	21"
07-16-08	11'	75°	75°	25"	30"
07-17-09	10'	70°	63°	17"	22"
07-20-10	10'	75°	70°	24"	30"
07-13-11	9.5'	80°	69°	30.5"	35.5"
07-20-12	11'	81°	93°	19.25"	24.25"
07-19-13	13'	83°	74°	17"	22"

## Membership

Paid membership to date this year is 233. If you know someone new in your area that might be interested in becoming a member of the SLA, notify Marianne Borgeson. She will contact the new property owners with information and make them feel welcome to the area. Notify Marianne of any changes to the directory information including address or phone changes. Contact Marianne at 320-963-2674 or email [membership@sugarlake.org](mailto:membership@sugarlake.org).

## News Flash

The Sugar Lake Association maintains two email lists for communication with membership:

**News Flash:** This list is used to send information about invasive species treatment, event announcements, member information, government information, etc. To subscribe to this list send an e-mail to [newsflash@sugarlake.org](mailto:newsflash@sugarlake.org) requesting addition.

**For Sale:** This list is used to send information about items "for sale" by the membership. To subscribe to this list send an email to [for-sale@sugarlake.org](mailto:for-sale@sugarlake.org) requesting addition.

If you wish to unsubscribe follow the instructions in the email you receive from the list or send an email requesting removal to the addresses listed above.

For the latest news on Sugar Lake visit our website: [www.sugarlake.org](http://www.sugarlake.org)

## Rainfall

May rainfall was 4.95 inches. June rainfall totaled 4.85 inches. July rainfall through the 24th has been 1.90 inches. Year to date rainfall through June has been 26.9 inches or about 5 inches above normal. Thanks to Andy Juetten for providing rainfall data.

## Treasurer's Report

As of June 30, 2013

General Fund	\$18,986.34
Lake Improvement Fund	\$36,339.40
Milfoil and Invasive Species Fund	<u>\$118,694.49</u>
<b>Total All Funds</b>	<b>\$174,020.23</b>

## Township News

**Corinna Township** Town Board meetings are held the first and third Tuesdays of every month at 7 p.m. The Corinna Town Hall is located on Ireland Ave, 1/3 mile north of County Road 39.

Clerk: Mary Barkley Brown 320-274-8049

- Visit the Corinna Township website at [www.corinnatownship.com](http://www.corinnatownship.com).
- Junk amnesty day will be held Saturday, July 27, 7:30 am to noon at the Corinna Township Hall.

**Clearwater Township** Town Board meetings are held the third Tuesday of every month at 7:30 p.m. The Clearwater Town Hall is located on Highway 24, 3 -1/2 miles south of Clearwater.

Clerk: Jean Just —Town Hall Phone: 320-558-6790

- Visit the Clearwater Township website at [www.clearwatertownshipmn.govoffice2.com](http://www.clearwatertownshipmn.govoffice2.com).

## Annual Meeting and Board Election

Proxy vote ballots and candidate statements for the candidates interested in serving as Board members are enclosed. You may cast your vote in person at the annual meeting, August 17, or you may vote by mail. Please return your ballot to the SLA secretary, Andrea Welter, on or before 8:00 a.m. Saturday, August 17.

Six board positions need to be filled this August. Open positions will be filled by appointment by the Board of Directors. Appointed board members will serve one year of the three year term, then will be confirmed by vote at the 2014 annual meeting to complete the remaining two years.

Proxy  
Sugar Lake Association  
Annual Meeting  
August 17, 2013

Sugar Lake Association Bylaws, Article 4, Section 10;

A vote may be cast in person or by proxy, provided that proxies shall be in writing, shall be only for the particular meeting designated therein, and shall be filed with the Secretary before the appointed time of the meeting.

I appoint  SLA Chairman, Don Peterson or  
 SLA Member, \_\_\_\_\_  
(Print Member Name)

as holder of my Proxy to vote on my behalf at the Sugar Lake Annual meeting August 17, 2013. My proxy for Directors should be cast as shown below.

Signed: \_\_\_\_\_ Date: \_\_\_\_\_

Print Name: \_\_\_\_\_

Address: \_\_\_\_\_

City: \_\_\_\_\_ State: \_\_\_\_\_ Zip: \_\_\_\_\_

I am a Sugar Lake Association member.

Select up to 6 Candidates for Director:

- Cathy Beckman
- Karen Sutherland
- Janet Tift
- Ken Vande Steeg

- Please return this form on or before 8:00 a.m., Saturday, August 17, 2013, to:  
Andrea Welter  
PO Box 696  
Maple Lake, MN 55358

## Sugar Lake Association Candidates for the Board of Directors

### Cathy Beckman

**Lake Address:** 10880 Imhoff Ave NW, Annandale, MN, 55302

**Area:** R; **Owner/Full time resident**

I have had the privilege to be a resident of Sugar Lake since 1987. My husband, Doug, has been a resident since 1966. We raised our 2 children on this lake.

I previously served on the Sugar Lake Assoc. Board for a 2 year term in 2009. I was also Membership Chair. I currently co-chair the Brandon Beckman Memorial-Sugar Lake 5K, with Kristin Beltrand Turner. This event honors the memory of my son Brandon; we only knew one home, Sugar Lake.

I am ALWAYS proud to say that I am a resident of Sugar Lake. Our association is a blend of exceptional talent and strengths. We are an exemplary example for other lake associations. Many people give freely of their time and talents to help to continue the effort to keep Sugar Lake clean, safe, and an eternal resource to pass on to our children.

### Karen Sutherland

**Lake Address:** 7488 106 St NW, Maple Lake, MN, 55358

**Area:** N; **Owner/Seasonal resident; an association member for 34 years**

Since leaving the Board three years ago, I have continued to contribute to Sugar Lake through my work in the native plant garden at the south access, organizing the annual plant exchange/sale and helping to keep the SLA web site updated. This work and the ongoing restoration of my own shore has provided experience in shoreline restoration that should benefit SLA as we move forward on future restoration work.

### Janet Tift

**Lake Address:** 6571 123 St NW, Maple Lake, MN, 55358

**Area:** B; **Owner/Seasonal resident**

2014 will mark the 50th anniversary of when my dad purchased our cabin on Sugar Lake. This year I have taken full ownership of the property. Needless to say Sugar Lake has been a central part of our family life since I was 14 years old. 49 years ago I met my lifelong best friend who has a cabin next door. Now our granddaughters are experiencing the magic of Sugar Lake. My father, John Christensen, was a board member early in the history of the SLA and now it is time for me to carry on the mission of preserving and protecting this incredible resource for generations to come.

### Ken Vande Steeg

**Lake Address:** 11047 Hollister Ave NW, Maple Lake, MN, 55358

**Area:** K; **Owner/Full time resident**

My wife Julie and I are recent residents on Sugar Lake. We moved to Sugar Lake in November, 2011.

We did considerable research in the area with all the surrounding lakes in the area and realized Sugar Lake was the premiere lake to reside. It seems like this is a very active and involved association and residents really care and are involved in the maintaining of the lake and shores. I am concerned about the invasive species that would greatly affect our lake and I'd like to be a part of this group that would maintain and monitor efforts to improve our lake. My objective is to assure the lake waters are protected, and take any steps needed to preserve our lake and shores for us and our children.

## YOUR SLA PICNIC PRIZES

In recent years we have had a wide variety of door prizes for members who attend the picnic. These prizes have been in addition to the raffle ticket winnings, lunch and beverages, game prizes and other membership "freebies" such as the directory. As always, it takes a team of volunteers and a lot of follow-up hours to seek out these items from the local businesses, several of whom have been feeling the squeeze of multiple lake association requests during a tight economic time. Perhaps you read the requests for our members to offer gift items that could be among our door prizes. Did your family participate?

IT'S NOT TOO LATE to contact:

Mike Menglekoch  
320-963-8518

Email: [mengemrm@comcast.net](mailto:mengemrm@comcast.net)

to donate. All items are welcome. Thank you for being a good neighbor and helping make this event successful!

## Diane's Lights Night

By Doc Williams

How are your plans going for the last hurrah of the season, Diane's Lights Night? It will be held on Saturday evening of Labor Day Weekend. Have you assembled a team, thought up a display, or started gathering your materials? The DeGroot Family, last year's winners, will be this year's judges. That kind of takes them out of the running. This gives us a chance to take home a prize including a case of Pepsi product for each of the 12 weeks of summer next year. Why not put up a display that you did in the past but didn't win anything. I remember a big flag made out of colored luminaries, a sail boat, Ferris wheel, and loon, just to name a few previous displays. A number of winners in the past have depicted current events. How about joining in with several neighbors and making a display that takes a lot of land to erect. A big canoe or the outline of the lake comes to mind. The possibilities are unlimited. If you aren't that imaginative, put up a simple display on your dock and/or front lawn just to join in on the fun. Times a wastin', better get goin'.



## Fourth Annual Brandon Beckman Memorial- Sugar Lake 5K Saturday, Aug. 31.

On Saturday, August 31, 2013, the fourth annual Sugar Lake Brandon Beckman Memorial 5K run/walk will take place. The start line and finish line will be at the Corinna Township Hall on Ireland Ave. The race will go north on Ireland Ave, down Imhoff Ave NW, and then back on Ireland Ave. All ages are welcome. The roads will be patrolled.



*This is a non-USATF registered event. Funds go to the Sugar Lake Association/ Lake Improvement Fund. The SLA is a 501C-3, and all donations are tax deductible. Feel free to donate even if not participating.*

8:00 – 8:45 am Registration/Check-In  
9:00 am 5K Run/Walk  
10:00 am Post-Race Brunch/Party at The Hitching Post at Lake Center

The registration form is available at:  
[www.sugarlake.org](http://www.sugarlake.org).

New this year, order a t-shirt even if you don't run/walk. Refer to the registration form for details.

## Outdoor Catholic Mass

On Sunday of Labor Day weekend Father Marty Shallbetter will again celebrate an outdoor Catholic Mass at his family's cabin. It is located on the west side of Sunset point at 11777 Gulden Av. N W (area G). Park on the west side of the road. If you wish to come by boat, you may tie up at any of the neighboring docks. Look for the sign. Mass will start at 10 AM and refreshments will be served after. Some chairs will be provided however, you may want to bring your own. Please join us.

## SUGAR LAKE FUNDRAISER

Saturday, August 24, 5 - 6:30 pm  
Wine sampling and garden viewing at Karen Sutherland's Native Lakeshore 7488—106 St NW, Maple Lake, MN 55358.

Driving Directions: Enter via gravel road from Highway 123 and Howe. There will be signs pointing to parking.

Karen is a Wright County Master Gardener and completed a native shoreline restoration in 2010.

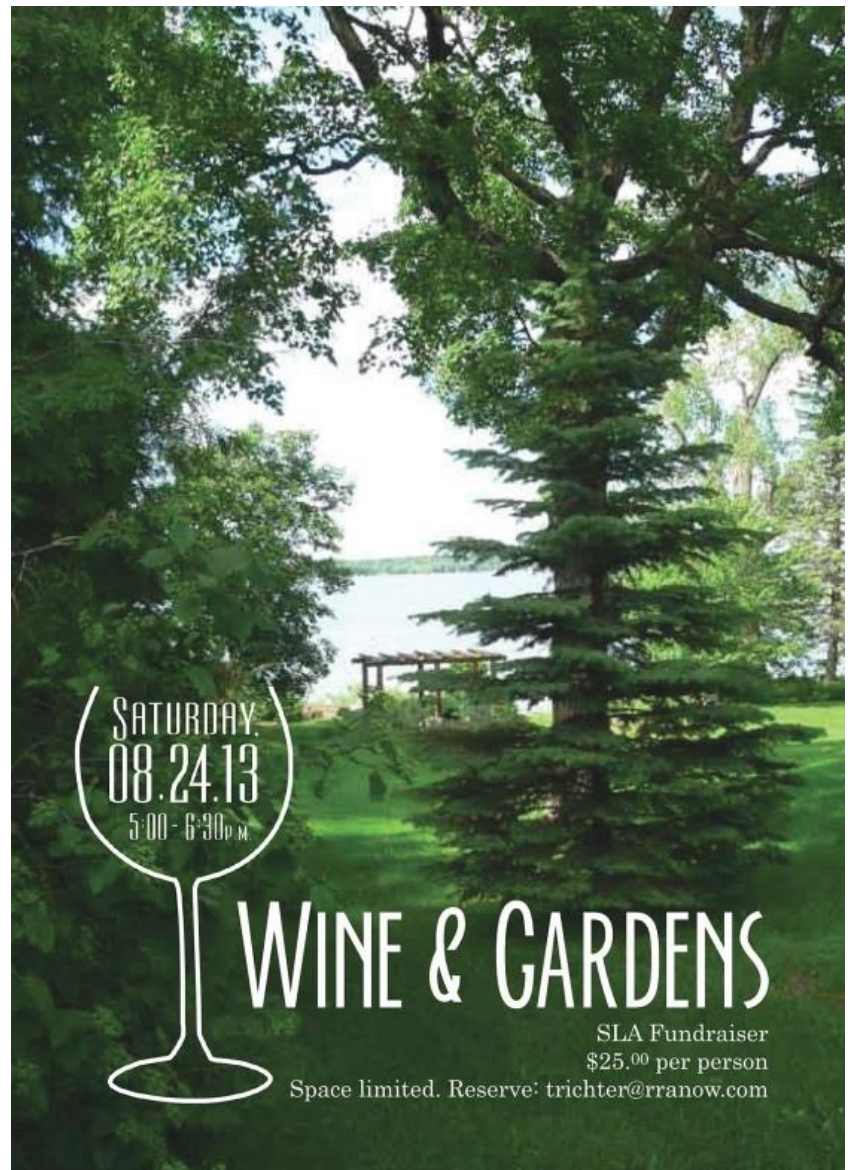
Cost is only \$25/person. Space is limited. Contact Trudy Richter today at [trichter@rranow.com](mailto:trichter@rranow.com) to express your interest in attending.

We will be featuring some specially selected Minnesota wines for sampling and offering full glasses of wine from (California? Italy? Spain?) for drinking. We will also offer Minnesota-produced delectable cheeses and local sausages to whet your appetite.

*Why Minnesota wines for sampling?* Many may be surprised to learn that Minnesota is home to over over 600 vineyards and more than 30 wineries. The vast majority of these were started in the last five years - tremendous growth for any industry. In addition to this astounding growth, the Minnesota grape and wine industry also provides significant economic impact. Including grape growing, winery operations and winery-related tourism, the combined impact of the Minnesota grape and wine industry contributes over 40 million dollars annually to the Minnesota economy.

Again, come support the Sugar Lake Association's native restoration projects, specifically the Monarch Way Station, and experience some undiscovered treasures from Minnesota!

The Monarch Way station is at the south public access to Sugar Lake. You can see the sign pictured to the left in the native garden on the west side of the driveway descending to the boat launch.



## Vegetation Report

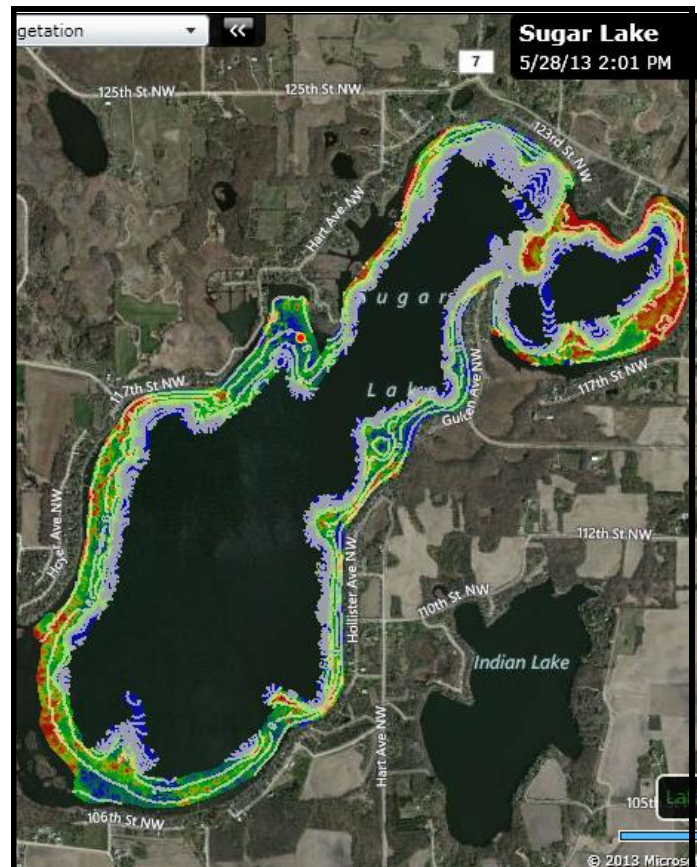
By Dale Gustafson

This year the Association supported purchasing the equipment and subscribing to online website support for a new way to keep track of the vegetation in Sugar Lake. This product was purchased from Contour Innovations and is called ciBioBase Aquatic Mapping System. It consists of a Lowrance HDS 7 Gen 2 Touch screen depth finder equipped with two types of transducers, and the technical support and website to post and process the information gathered from the lake.

Dan Erdmann and I have spent many hours learning how to operate the equipment and to transfer data to and from the website. In addition to that we have spent lots of hours on the lake collecting the data that you can see on this page. To gather the data, we drive the boat about 5 miles per hour in a back and forth manner with each pass we travel about 30 feet from the last pass. As you can imagine, that is lots of trips back and forth. As we do that data collection we are looking to spot Eurasian water milfoil, in addition, we are also watching the screen of the depth finder as it is displaying high definition images of the vegetation and lake bottom below the boat. As we use the equipment more and more we are gaining some ability to identify the types of plants we are seeing on the depth finder. This is helpful, but we also have to go back to the areas of suspected EWM and verify what is really there. We are confident that with this new equipment we will gain a lot more knowledge of exactly where invasive plants are. We may not spend less on treatment costs, but we are confident that we will be spending our money wisely.

We are in the final stages of identifying areas of Eurasian water milfoil that we will treat in the next few weeks. We will notify you by SLA News Flash when the treatment is going to be made, but watch for the signs along the shore and follow the warnings. The only warning from this treatment will be to stop your automatic irrigation for a few days after the treatment. We expect to treat about 20 acres in several parts of the lake. There are several areas in the south part of the lake, and again in the Sunset bay area. Most of the areas are far enough from shore that the warning may not apply. These areas will also be marked with 1 Gallon plastic bottles with orange labels attached.

It is my opinion that the lake has not looked this good in many decades. The water is clear, and the native populations of plants are exceptional. We are finding very strong stands of large leaf pondweed and Clasp- ing leaf pond weed that provide excellent habitat for fish.



### Vegetation Map

The above map is an accumulation of 24 different mapping trips on the lake. We only covered the shoreline areas out to a depth of about 25 feet. The green color represents moderate density of vegetation and the red areas represents more dense areas. As we scan in the shallower areas we see more red because even a foot or two of vegetation creates a high density percentage in that shallow water. The dark red spots in the deeper water represent a lot more plants than the shallow red areas. Also, some of these survey trips were taken earlier than others and the density had not developed as much.

*If you receive the black & white printed version of the newsletter this map will be available in color on the web at [www.sugarlake.org](http://www.sugarlake.org).*

## Aug 3 Fireworks

The fireworks show, originally planned for July 6, is ready to go for the night of the annual picnic, August 3. The show takes place on the west side of the lake in area S. Joel Williams and Waconia



Pyrotechnic donate all the labor for this show. If you are viewing the fireworks from the lake please pay attention to the perimeter buoys set up, listen to any announcements, and respectfully comply with any requests made to move outside the safe perimeter. The show will not start until all boats are clear of

the marked perimeter.

We can still use your contributions to make our funding goal. Please send your contribution to:

SLA Treasurer  
Jon Juntunen  
1342 8th St NW  
Buffalo, MN, 55313.

## Raffle Update

One week left to sell your raffle tickets! Many thanks to all of you who have sold tickets! Raffle ticket proceeds will all go to the Milfoil and Invasive Species Fund. As always, there will be additional opportunities to buy more raffle tickets at the picnic.

If you would like more tickets to sell, please contact Jon Juntunen

320-963-7344

If you would like to return your sold ticket stubs and checks (NO CASH PLEASE!), made payable to the Sugar Lake Association, please send them to SLA Treasurer 1342 80<sup>th</sup> St NW, Buffalo, MN 55313.

## EWM Removal (Eurasian water milfoil)

It is extremely important that you attempt to remove all the EWM in the areas close to shore by your property. Please go to our website [www.sugarlake.org](http://www.sugarlake.org) for instruction on removing this plant.

ADDRESS SERVICE REQUESTED

The Sugar Lake Association  
12282 Hart Ave NW  
Amandale, MN 55302

