

# The Sugar Lake News

AUGUST 2010

## Sugar Lake Association Minnesota Waters' 2010 Lake Association of the Year 2009 Star Lake Recipient

*2010*

### Calendar of Events

**September 4-**Diane's Lights Night

First Annual 5K Run

**September 18-** SLA Meeting\*

**October 16-**SLA Meeting\*

\*SLA meetings are held at the Corinna

Township hall at

8:00 a.m.

September & October meetings at 9 a.m.

#### **Send Newsletter submissions to:**

Don Peterson

319 Wayside Rd W

Hopkins, MN 55343

Home 952-939-0172

Work 952-361-3026

E-mail [don@sugarlake.org](mailto:don@sugarlake.org)

**For membership,  
address, e-mail, or property owner  
changes**

contact Cathy Beckman at

10880 Imhoff Ave NW

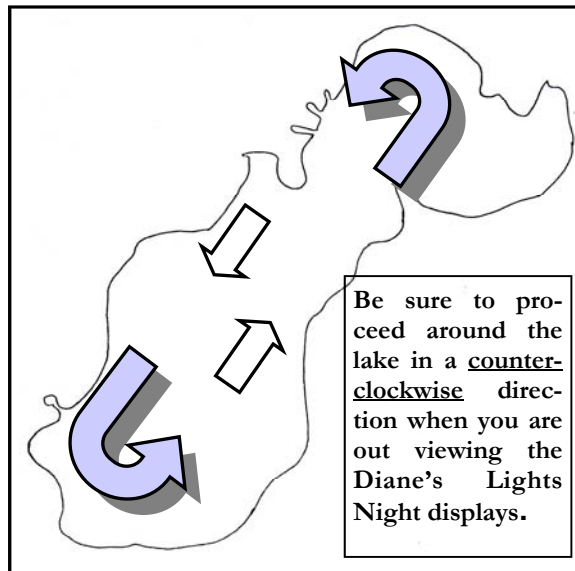
Annandale, MN 55302

320-274-8623

E-mail [membership@sugarlake.org](mailto:membership@sugarlake.org)

### Diane's Lights Night By Doc Williams

Labor Day is fast approaching and that means it's almost time to bid farewell to another summer. The days will start to cool, farmers will harvest what looks to be a bountiful crop, and nature will put on a brilliant display of colors for all to enjoy. We on Sugar Lake have an opportunity to bid a grand farewell to the season and all our neighbors with Diane's Lights Night. The tradition of placing luminaries on our lakeshore has been going on since Diane Radtke introduced the idea in 1996. She named it Sugar Lights and it was such a beautiful custom that after her death in 2000, the night was renamed in her honor. Why not join this tradition and put a display in your yard. It can be big or small, elaborate or modest, unique or simple. Each lake home that puts up a display adds to the evening. Join in on the fun and put a display in your yard; you could be the winner of a summer of free Pepsi products. Remember, the source of your illumination must be a flame. The event will commence at dusk on Saturday, Sept 4<sup>th</sup>. If it is raining at 1 PM or any time thereafter, it will be held the next day. To ensure safe boating at night, we ask that everyone proceed counter clockwise around the lake. If you have a swim platform consider bringing it into shore or lighting it in some way to avoid an accident. Let's make this the best Diane's Lights Night ever. Light up the night with your display and make Sugar Lake shine like the jewel that it is.



## Brandon Beckman Memorial 5K Run/Walk

### September 4

The first annual Sugar Lake Run/Walk in memory of Brandon Beckman will be held on Saturday September 4, beginning at 9 a.m. Brandon grew up on Sugar Lake. He loved the lake and he loved to run. Whether you run or walk 5K or 1K, join us in this tribute to a fine young man who left us much too soon. All profits go to SLA.

It is not too late to register. Download a registration form from the Sugar Lake website [www.sugarlake.org](http://www.sugarlake.org). Registration will also be available the day of the race. Registration/ check-in begins at 8 a.m. at the Corinna Township Hall on Ireland Ave, 1/3 mile north of County Road 39.

## Water Quality Report

The latest lake report. The physical condition was 4 on a scale of 1 (good) to 5 (poor).

Date	Clarity	Water Temp	Air Temp	Culvert	
				Inlet	Outlet
08-17-05	8'	70°	78°	18"	23"
08-15-06	7'	86°	79°	15"	20"
08-15-07	8'	79°	79°	15"	20"
08-14-08	8'	75°	74°	16"	21"
08-13-09	10'	81°	71°	18"	23"
08-18-10	7.5'	77°	72°	23.5"	29.5"

## Membership

Paid membership to date this year is 305. If you know someone new in your area that might be interested in becoming a member of the SLA, notify Cathy Beckman. She will contact the new property owners with information and make them feel welcome to the area. Notify Cathy of any changes to the directory information including address or phone changes. Contact Cathy at 320-274-8623 or email [membership@sugarlake.org](mailto:membership@sugarlake.org).

## News Flash

The Sugar Lake Association maintains two email lists for communication with membership:

**News Flash:** This list is used to send information about invasive species treatment, event announcements, member information, government information, etc. To subscribe to this list send an e-mail to [newsflash@sugarlake.org](mailto:newsflash@sugarlake.org) requesting addition.

**For Sale:** This list is used to send information about items "for sale" by the membership. To subscribe to this list send an email to [forsale@sugarlake.org](mailto:forsale@sugarlake.org) requesting addition.

If you wish to unsubscribe follow the instructions in the email you receive from the list or send an email requesting removal to the addresses listed above.

For the latest news on Sugar Lake visit our website:

[www.sugarlake.org](http://www.sugarlake.org)

## Newsletter

Help save postage and printing costs by subscribing to the electronic version of the Sugar Lake News. You will receive a PDF file by email that looks like this newsletter *but in color*. Contact [newsletter@sugarlake.org](mailto:newsletter@sugarlake.org) with your email address if you are interested.

## Treasurer's Report

As of August 21, 2010

General Fund	\$16,581.85
Lake Improvement Fund	\$15,392.62
Milfoil and Invasive Species Fund	<u>\$90,488.42</u>
<b>Total All Funds</b>	<b>\$122,462.89</b>

## Rainfall

July rainfall totaled 2.22 inches. August rainfall through 8/24 has been 4.75 inches. Year to date rainfall is 20.7 inches, about 1 inch above normal. Thanks to Andy Juetten for providing monthly rainfall totals.

## Township News

**Corinna Township** Town Board meetings are held the first and third Tuesdays of every month at 7 p.m. The Corinna Town Hall is located on Ireland Ave, 1/3 mile north of County Road 39.

Clerk: Mary Barkley Brown 320-274-8049

- Visit the Corinna Township website at [www.corinnatownship.com](http://www.corinnatownship.com).

**Clearwater Township** Town Board meetings are held the third Tuesday of every month at 7:30 p.m. The Clearwater Town Hall is located on Highway 24, 3-1/2 miles south of Clearwater.

Clerk: Sharon Lee 320-558-6725

- Visit the Clearwater Township website at [www.clearwatertownshipmn.govoffice2.com](http://www.clearwatertownshipmn.govoffice2.com).

## Outdoor Catholic Mass

On Sunday of Labor Day weekend Father Marty Shallbetter will celebrate a Catholic Mass at his family's cabin which is on the west side of Sunset point. The address is 11777 Gulden Av. N W (area G). Mass will start at 10 AM and refreshments will be served after. Some chairs will be provided however, you may want to bring your own. If you wish to come by boat, you may tie up at any of the neighboring docks. All are welcome.

## Thefts

There have been a number of thefts along the east shore of Sugar Lake over the last few weeks. The thefts mostly involve unlocked cars and happen mid-week. Please keep your houses and cars locked. Be on the lookout for suspicious activity and call the Wright County Sheriff to report any problems.

## Sugar Lake Board Election Results

The Annual Meeting and Board elections were held on August 21. The results are:

### New Board Members

(Terms expire August 31, 2013)



Pictured left to right: Andrea Welter, Marilyn Hiscock, Tom Nimmo, Tom Pugh, Marianne Borgeson. Not pictured: Bob Brabant.

## Thank You

Thanks to the following outgoing board members.



Pictured left to right: Greg Suddendorf, Ed Quinn, Rick Kanniaainen, Steve Mann, Rhonda Hiler, Jim Stewart. Not pictured: Karen Sutherland.

## Note

Jim Stewart resigned his board position. Jim completed two years of his three year term and has been the Association Treasurer. Thank You Jim. Trudy Gutowski was appointed to fill the remaining year of Jim's term.

## Vegetation Report

Again this year we have good news to report about Curly leaf pondweed and Eurasian water milfoil. We treated Curly leaf pondweed in 53 acres of the lake this spring and had very good control. This summer we treated only about 6 acres of Eurasian water milfoil to control some small infestations on the east and west sides of the lake. Control of Eurasian water milfoil was acceptable but not complete. We know these plants have not been eliminated, but we are keeping them under control. We expect to treat again next spring, but we will not know how much we will have to treat until next spring.

Thank you for your donations in the past. Because of your faithful donations we have been ready to treat these invasive plants as they appear. We want to continue to maintain our Invasive Species Funds so we are able to continue the fight. We may need new funds to continue the fight against these plants and be ready to fight new invasive species such as Zebra Mussels.

Dale Gustafson – Vegetation Committee

## Loons

This group of 13 loons was part of a group of 17 spotted Saturday, July 31 by Ron and LuAnn Elsner, photo by LuAnn.

What do you call a group of loons? The website 'whatabrid.com' says: A group of loons has many collective nouns, including an "asylum", "cry", "loomery", "raft", and "water dance" of loons.



## Sugar Lake Apparel

The 2010 Apparel sales went well. It isn't always easy to think about sweatshirts and jackets when both the heat and humidity are over 90, so thank you for supporting this fundraiser! Orders are in process now and the finished goods should be available by Labor Day, as always. Watch for a newsflash re: picking up your item(s) at either the Erdmann home on Sunset Point or the Gusaas cabin just south of the Warner Campground.



Next year Sheree and Karen are considering some additional items. Please let us know if you have a suggestion or even a specific request so we can keep this interesting. Ideas so far include: Youth t-shirts, a blanket or throw, sleeveless shirts, picture frames, etc. but we have yet to decide if there is sufficient interest to expand the number of items for sale. What do you think?



# Picnic Recap

Picnic photos by Cindi Peterson

After a rainy morning a crowd of more than 700 turned out for this year's picnic.

The picnic committee chairs this year were Deb Beltrand and Betsy Hanson, pictured to the left. A large volunteer staff is needed before, during, and after the picnic. Thanks to Deb, Betsy and all the volunteers who worked so hard

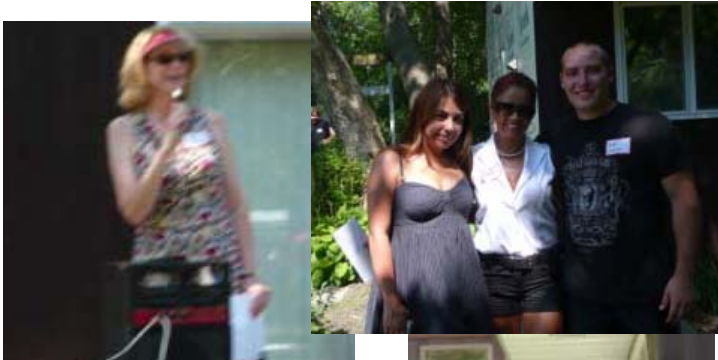
to make the annual picnic a success.

Expenses came in under budget . Raffle sales totaled about \$4200. Raffle income was deposited in the milfoil and invasive species fund. Thank you for the extra donations for extra guests.

Thanks to Karl Enghauser and his wife Enith for again hosting the picnic on their grounds.

### Raffle winners were:

- 1st: Roz Roswell
- 2nd: Andrew Giertsen
- 3rd: Paul Gilles





## DNR

We had two representatives of the Minnesota DNR at the picnic. Joe Stewig, pictured to the left is with Fisheries and Francine Woodford, pictured to the right, is with the Stop Aquatic Hitchhikers program. They answered questions and passed out materials.



## Education

By Ed Quinn

This is the first in a series of short education topics.

The subject of water quality has been discussed many times by the SLA board. It was decided in 2001 that we needed a base line to see if we were getting better or worse. We chose the Wright County sampling program to accomplish this. Volunteers started taking water samples and secchi disc readings for Wright County in 2002. You can access this information by going to the web site [www.rmbel.info](http://www.rmbel.info).

Click on: Lakes program

Click on: Lakes database

Look for query criteria

Choose county and lake

Click on: View reports

FYI: Jim Kastl took secchi disc readings for the State of Minnesota for many years.

His data can be found on the MPCA STORET database.

## Golf Tournament



The second annual Sugar Lake Association benefit golf outing was held at the Southbrook Golf Club July 31. The event was organized by Greg Selle (on the right in the picture). By all accounts, it was a huge success. 49

golfers signed up to play, 65 people attended the dinner following. Dinner was followed by both a silent and live auction. Everyone in attendance received a prize of some kind. 17 hole sponsors supported the tournament. \$2400 was raised for the Milfoil and invasive species fund. Thanks to all the hole sponsors, prize donators, participants, Southbrook Golf Club, and to Greg Selle for organizing the event. We are looking forward to next years benefit golf outing.

### Hole Sponsors

Charlotte Quiggle  
Diamond Vogel Paints  
Don Peterson  
Englesma Construction  
G. E. Selle/Joni Selle  
Coldwell Banker Burnet  
Grazia Communications  
Jaeger Family Trust  
Karen Sutherland  
Legacy Insurance  
LG Company  
M & M Express  
MG Drywall  
Morton Paterson Inc  
Pittsburg Paints  
Sandberg Family  
Sherwood Williams Paints  
State Agencies

### Prizes Donated

Bob and Maureen Presti-filippo  
Bob Niederer  
Bridget Imkamp  
Carol Kannianen  
Cris Alves  
Diamond Vogel Paints  
Gardendale Nursery  
Gary Grant  
Jeff Lipinski  
Jim Kreatz  
Joni and Greg Selle  
Judy Schutte  
Lyn Nonhoff  
Moreys Seafood  
Pittsburg Paints  
Sherwood Williams Paints  
Susan Neiderman

## Thank You

to the following merchants and individuals for donating prizes for the Sugar Lake Picnic. Their generosity is greatly appreciated. Please remember these merchants as you shop.

A Meat Shop

A-1 Marine

Albion Ridge Golf

Annandale Sports & Chiropractic

Beckman Hardwood Floors

Coborns Clearwater

Dave & Beth Williams

Deb Beltrand

Dennis Langhoff/ Subway

Dingman Marine & More

H & H Marine

J & J Marine

Jeff Lundquist / Re Max

Jim Hanson

Jimmy's Pizza Clearwater

John Peery/ Re Max

Karen Gusaas

Kaz Hardware

Kluge Design

LaLa's Restaurant

Lake Center Bar & Grill

Maple Lake Lumber

MCP Collision

Mike Madden

Petty Brothers Meats

Purcell Plumbing

Quinn Family

Rancho Grande

Rick & Carol Kannianen

Rob Gusaas/ P & G

Ryan Auto

Snooty Fox

Steve Harnett/ Keebler

Subway

Z's Sports Buffalo

## South Public Landing Project

By Karen Sutherland

The SLA, one of seven organizations out of 27 applicants awarded a 2010 Lakes and Rivers Conservation Partnership Grant by Minnesota Waters, has used the funding to replace this weed and debris filled area with over 400 native plants. Our goals are to 1) decrease runoff into the lake at the access, 2) provide an environment that will no longer encourage trash dumping and 3) create an "idea showcase" on which to base further lakeshore improvement projects. Volunteers: Dale Gustafson designed the planting; Alfred Wurm and his Bobcat spread mulch; Don Peterson rewired electricity so that we can water; Roger Pippo dug holes for the shrubs; Terry Delbow replaced fence sections; Leanne Niznik, Charlotte Quiggle, Tom Niederer, Jim Stewart, Trudy Gutowski, Sue Dixon, Jan Eustache and Karen Sutherland planted on a rainy morning  
(This grant was funded by Michelob Golden Draft Light/ Anheuser-Busch, the National Fish and Wildlife Foundation and Minnesota Waters.)



## Zebra Mussels

By Dale Gustafson

As you probably have hear on the news, Lake Minnetonka has discovered that it has Zebra Mussels. This is bad news because it demonstrates that this invasive species will continue to spread to the popular lakes. This is also bad news for Sugar Lake because we have lots of people that like to come here to fish and boat. We think it is simply a matter of time before Zebra Mussels find their way to our lake.

I had a long conversation with the lead Zebra Mussel specialist recently and currently there is no good news. We have no "magic bullet" at this time. There is research being done, but there is nothing available to use right now. With that in mind, the Vegetation Committee believes we should start to monitor now so we know what our status is and perhaps by the time the Zebra Mussels get here there will be a way to control them.

We are looking for one volunteer in each of our Lake Areas to be willing to have and check a Zebra Mussel "monitor" (a small item hanging on a rope from your dock) and send weekly reports to Dale Gustafson to be submitted to the DNR. We hope that for a long time it will just take a few seconds to look at this monitor and send an email stating "no Zebras today". If we can do this faithfully, and we send this to the DNR regularly then when they do arrive, we will be ready to do what we can and the DNR will be there to support us in whatever manor they can. Ideally we would have a monitor hanging from every dock on the lake and all of us will watch for them.

At this time the real action we can take is to monitor our public landings and share the information available. If everyone follows the existing rules about transporting water and wet materials between lakes, this pest could be isolated to where it exists now. This is truly an education process to get people to take this seriously and do what they need to.

For a good summary of what Lake Minnetonka is facing now and a look at what our future could be read the latest blog posting by Dick Osgood, Executive Director of the Lake Minnetonka Association, at <http://www.lmassociation.blogspot.com>.



## SLA HONORED AS "LAKE ASSOCIATION OF THE YEAR"

By Charlotte Quiggle

Minnesota Waters honored the Sugar Lake Association as the "Lake Association of the Year" on a paddleboat cruise down the Mississippi River on Wednesday evening, August 18. Although six SLA members (Dale and Nan Gustafson, Don and Cindi Peterson, Karen Sutherland, and Charlotte Quiggle) were in attendance to accept the award (and accompanying \$1000 check donated by HDR Engineering), the award goes to *all of us!*

Minnesota Waters said that the SLA is remarkable among Minnesota's lake associations not only because more than 80% of property owners are members, but also because of the high level of active volunteer participation of our members. Here's some of what we do:

20% of SLA members have served on the board over the past 14 years. Other members volunteer by: helping with AIS control; monitoring water quality; shorescaping; placing and removing buoys that mark sensitive vegetation; putting out loon nesting platforms; cleaning carp traps; participating as water and ice patrols; manning the accesses on holidays; and organizing the fishing contest, picnic, golf outing, plant exchange and 5K run-walk. Members foster the Sugar Lake community through other activities like the fireworks and Diane's Light's Out. Volunteers arrange educational workshops and bring in speakers to the Winter Meeting. More than 30 people are involved with communicating SLA issues and events to members by working on the newsletter, website and newflashes and by acting as area communicators. Others volunteer year-round to keep track of membership, balance the books and write grant proposals. SLA members serve on the township planning commission and work closely with other governmental agencies to benefit the lake.



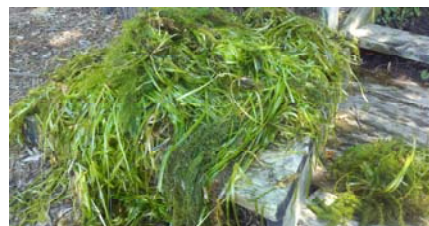
When the SLA needs volunteers, people respond. When asked, SLA members dig deep into their pockets to help fund the various projects that serve to protect and improve Sugar Lake. In other words, SLA members are *unusually* generous with both their time and their money.

This generosity springs from the fact that many of us are second (and in some cases, third) generation SLA members. We learned from our parents and grandparents how to be good stewards of the lake. This enthusiasm is infectious—new property owners join the SLA every year and care as passionately about the lake as old-timers.

Congratulations to all of us! And THANKS!

[For more of the details about the activities and projects that the SLA has done over the past several years, see the Nomination Letter that so impressed Minnesota Waters on the website at [www.sugarlake.org/LakeAssoc2010](http://www.sugarlake.org/LakeAssoc2010)]

## Water Celery



Several people have asked in the last couple weeks about the large weed masses floating in the lake. They want to know "Who is pulling all those weeds and letting them float in the lake?" What we are seeing is wild celery, *Vallisneria Americana*, also known as eel-grass or tape-grass. It is a native plant that is an important food source for waterfowl and also provides good fish habitat. It normally expands with spreading rhizomes but in the fall pieces break free from rhizomes and float to new locations. This is what we are seeing, possibly amplified by wave action and boat traffic. It is a good idea to re-

move it from your shore so it doesn't decompose and add nutrients to the water. If you pile it on the dock it quickly dries out and is easy to dispose of.

Source: *Field Guide to Aquatic Plants*



**FOR SALE**

Set of 2007 aluminum 23" diameter pontoons—tubes only. They are in good shape, asking \$1800 or best offer.

Contact Pat 612-390-6644

**FOR SALE**

Starcraft Sealite 12 foot fiberglass sailboat.  
\$75 or best offer.  
On Sugar Lake.

Contact Gloria Schuette  
H: 763-972-9337  
L: 320-963-5554  
Cell: 612-202-5083

**Newsletter Classified Advertising**

The Sugar Lake newsletter is published 7 times per year. April through October. The deadline for ads in the newsletter is the third Saturday of the month. It is usually in the mail by the end of the month. Please contact Don Peterson:

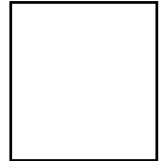
Email: don@sugarlake.org

Mail: Don Peterson, 319 Wayside Rd W, Hopkins, MN, 55343

Phone: 952-212-9524

---

The Sugar Lake Association  
The Sugar Lake News  
10880 Imhoff Ave NW  
Annandale, MN 55302



ADDRESS SERVICE REQUESTED