

# The Sugar Lake News

AUGUST 2007

2007

## Calendar of Events

September 1-Diane's Lights Night

September 15- SLA Meeting\*

October 20-SLA Meeting\*

\*SLA meetings are held at the Corinna Township hall at 8:00 a.m.

### Send Newsletter submissions to:

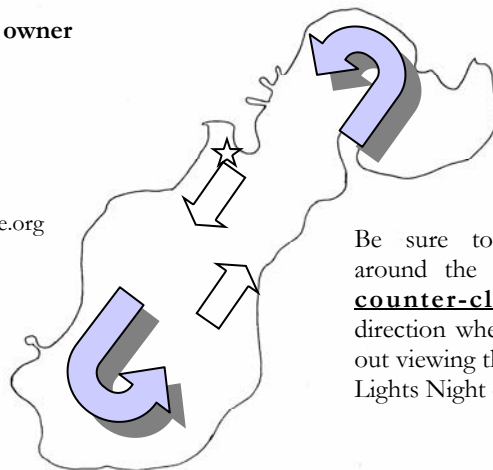
Don Peterson  
319 Wayside Rd W  
Hopkins, MN 55343  
Home 952-939-0172  
Work 952-361-3026  
E-mail don@sugarlake.org

### For membership, address, e-mail, or property owner changes

contact Craig Johnson at  
3312 132 St W  
Burnsville, MN 55337  
952-894-3593  
E-mail membership@sugarlake.org

## Diane's Lights Night

Labor Day is almost here and that means it's time for Diane's Lights Night. Hopefully you have decided to participate and will have a shoreline display. You could be the winner of "a summer of Pepsi," but remember, everyone who participates is a winner by making our lake shine. The event will take place on Saturday, Sept 1<sup>st</sup> starting at dusk. If it is raining at noon, or any time thereafter on Saturday, the event will be postponed until Sunday Sept 2<sup>nd</sup>. Hopefully we won't have a wash-out like last year. We ask that everyone boating that evening to proceed counter-clockwise around the lake. This will facilitate a smooth traffic flow and allow your passengers the best view of the various displays. We ask the owners of swimming platforms to consider bringing them into shore for the evening. As an alternative, you can put several luminaries on the deck so they can be easily seen at night. No one wants an accident to occur and reflectors only work when a light shines directly on them. Your display can include luminaries, campfires, torches, or anything that has a flame as its light source. Any electric lighting will disqualify your display from competition. If you have any questions concerning the evening, call Doc Williams, 963-6776, and I will be happy to answer them. Above all, have fun. See you on the lake.



Be sure to proceed around the lake in a **counter-clockwise** direction when you are out viewing the Diane's Lights Night displays.

## ATTENTION

Due to the increased amount of milfoil in Addison Bay this year the vegetation committee is asking us to bypass the area as we tour the lake on Diane's Lights night. Boat traffic in the bay is currently being directed with channel markers. Help prevent the spread of milfoil and enjoy the lights in Addison Bay from a distance Saturday night September 1. Addison Bay is marked with a star on the map to the left.

## **Thank You**

to the following merchants and individuals for donating prizes for the Sugar Lake Picnic. Their generosity is greatly appreciated. Please remember these merchants as you shop.

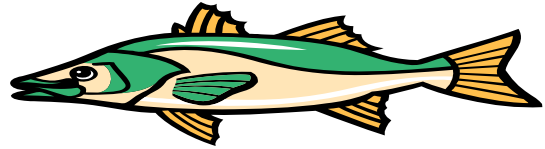
A Great Floor  
Anchor Dock & Lift  
Annandale Auto Care  
Annandale Paintball  
Annandale Veterinary Clinic  
Annandale Video  
Clearwater Coburns  
Deb Beltrand  
Jeff Lundquist

Joel Williams  
Just Your Style  
Kathy Radtke-Slama  
Lake Center  
Little Jims  
M & M Express Lube  
Mike Madden  
Miller Jewelry  
Nathan Tift

New Designs Hair Care  
O'Brothers Wine & Spirits  
Petty Brothers  
ReMax  
Shear Style  
Steve Harnett / Keebler  
Sunset Point  
Veda Vargo

## KASTL'S KORNER

The latest lake report. The physical condition was 2 on a scale of 1 (good) to 5 (poor). Up to 6 loons noted.



Date	Clarity	Water Temp	Air Temp	Culvert	
				Inlet	Outlet
08-12-02	10'	74°	72°	25"	30"
08-15-03	9'	80°	88°	17"	22"
08-11-04	9'	65°	68°	17"	22"
08-17-05	8'	70°	78°	18"	23"
08-15-06	7'	86°	79°	15"	20"
08-15-07	8'	79°	79°	15"	20"

## Membership

Paid SLA membership for 2007 has reached 366.

### Please welcome new members:

Lawrence & Lavinia Aus  
Nathaniel & Susan Blaylock  
Gary & Donna Dovel  
Mark Hanson  
Anne Klien—Pahl  
Nathan Tift  
David Wirgau

If you know someone new in your area that might be interested in becoming a member of the SLA, notify Craig Johnson. He will contact the new property owners with information and make them feel welcome to the area. Notify Craig of any changes to the directory information including address or phone changes. Contact Craig at 952-894-3593 or email [membership@sugarlake.org](mailto:membership@sugarlake.org).

### SUGAR LAKE NEWS FLASH:

Want the latest information on what's going on at the lake? If you are not getting the occasional e-mail from the Association it's probably because we do not have your up to date e-mail address. Please just send an e-mail to [webmaster@sugarlake.org](mailto:webmaster@sugarlake.org) and you will be added to the list. We maintain two lists, one for News Flashes and one for "For Sale" information.

And, by the way, visit our website at [sugarlake.org](http://sugarlake.org) for all the latest.

## Treasurer's Report

As of August 18, 2007

General Fund	\$12,351.32
Lake Improvement Fund	\$16,610.03
Milfoil and Invasive Species Fund	\$91,843.94
<b>Total All Funds</b>	<b>\$120,805.29</b>

## Rainfall

July rainfall was 2.37 inches. August rainfall through the 22nd has been 5.22 inches. Thanks to Andy Juetten for providing monthly rainfall totals.

## Additional donations

Gary & Donna Dovel  
Jeff & Jennifer Jahn  
Don & Terry O'Conner  
Larry & Anna Purcell  
James & Janet Tift  
Nathan Tift

### **THANK YOU**

First place raffle winner, Peter Ramme, and second place raffle winner, Tom Michaud, both donated their winnings back to the Lake Association for deposit in the lake improvement fund.

Mike Mengelkoch donated the prizes for the children's games at the picnic.

## Township News

**Corinna Township** Town Board meetings are held the first and third Tuesdays of every month at 7 p.m. The Corinna Town Hall is located on Ireland Ave, 1/3 mile north of County Road 39.

Clerk: Vi Novotne 320-274-5179

- Visit the Corinna Township website at [www.corinnatownship.com](http://www.corinnatownship.com).

**Clearwater Township** Town Board meetings are held the third Tuesday of every month at 7:30 p.m. The Clearwater Town Hall is located on Highway 24, 3-1/2 miles south of Clearwater.

Clerk: Sharon Lee 320-558-6725

## Newsletter

Help save postage and printing costs by subscribing to the electronic version of the Sugar Lake News. You will receive a PDF file by email that looks like this newsletter but in color. Contact [membership@sugarlake.org](mailto:membership@sugarlake.org) with your email address if you are interested.

### **Give Our Lake a Break**

Have you had vegetation wash up on your shore? If so, please remove it. Decaying vegetation will add nutrients to the lake resulting in algae bloom.

## Area Highlights By Doc Williams

### The Mol Farm

As you cruise the south west corner of Sugar Lake, you may notice a silo sticking up above the trees. What you see is part of the Mol



Farm that was originally purchased by Christaan and Annie Mol in 1902 as an 80 acre dairy farm. In 1908 Christaan bought a second farm to the west which was also on the shores of Sugar. It was 120 acres that included part of Sandy Lake. This property had about 15 acres that were crop worthy with much of the rest being low land or gravel soil. There were 3 cabins on this farm that had been built as rentals on the shores of Sugar. They were erected in the late 1800 hundreds and measured 14' X 26'. These may have been the first cabins on Sugar Lake but that has yet to be verified. Christaan moved the buildings off the land and opened a gravel pit. He sold gravel to both the state and county that was then used to make roads in the area, including County Road 7 and Highway 24. Christaan did some of the farm work but left much of it to his 6 children, especially Jake. In 1923 Annie Mol, developed "falling of the bladder" that required surgery. Because of the hardship in getting to the hospital at Buffalo, the local doctor opted to perform the operation at the farm, on the kitchen table. This was not uncommon in those days; the youngest child was born in the bedroom. The procedure was successful, but infection set in and she subsequently died. The family struggled on through the dust bowl years of the 30's. The ongoing drought caused the lake shore to recede several hundred yards from its present location. This allowed marsh hay to be harvested on land that today is the bull rush area on the south west corner of the lake. It was used to help feed the cattle. A horse drawn hay mower did the job quite well. The first tractor on the homestead wasn't purchased until 1937 and it was a used Fordson. Jake bought the farm from his dad in 1945. Shortly after purchasing it, he sold 250 feet of lake shore on the east side to the DNR for \$699. This area then became the second public boat launch on the lake and we know it today as the south landing. He continued dairy farming and added hogs, beef cattle, and chickens. Jake's son Cliff purchased the farm in 1962 and expanded the hog and chicken operations to one of the largest in the area. There were 1500 hogs and 5500 laying hens. The locals called it Mol's ham & egg farm. Cliff sold 17 acres on the northwest side of the farm to Marion Engelman in 1969. Marion then built Imhoff Av. and developed the area for lake homes. One of the 3 original cabins is presently Cliff Mol's garage. In 1996, Cliff's son Tim became the 4<sup>th</sup> generation to own the farm. He continues to raise beef cattle and food grade hogs. Its present size is 152 acres of which 75 acres are in crops and 5 acres are pasture or farm buildings. The rest is woods and low lands. Tim does his best to be an environmentally friendly neighbor to the lake while still making a living off the land. If you happen to be cruising in the area and notice an odor, what you're sniffing is the smell of money. If you don't like the odor, keep in mind, the Mols' were here long before any of us.

## Thank You

Thanks to the outgoing board members pictured below. From left to right: Nancy Dunn, Pat Dahl, Arv Klemz, Tom Hall, Linda Williams.

Also thanks to outgoing board member Carla Huro not pictured here.



## Heart of the Lakes Coalition of Lake Associations

Earlier this summer, a number of lake associations in the Annandale area decided that we could all benefit by working together and have formed the "Heart of the Lakes Coalition of Lake Associations." There are currently 9 lakes involved (Sugar, Pleasant, Cedar, Clearwater, Sylvia, Granite, Augusta, John, Francis) as well as the Clearwater River Watershed District; any other lake associations in the NW Quadrant of Wright County are also welcome to join. Each lake association will have 2 representatives and one vote. Charlotte Quiggle has attended the 3 start-up meetings, and Rhonda Hiler has volunteered to be the 2nd representative from the SLA. Meetings will be held on the 3rd Wednesday of each month at 7PM at the Southside Town Hall. The draft Mission Statement reads as follows:

The Heart of the Lakes Coalition of Lake Associations exists to support its member associations in activities that preserve and enhance the quality of our waters and the natural beauty of our area lakes and we support activities that demonstrate responsible growth and development to this end. We represent our member's interest to Township, County, State and Federal governmental groups.

- Government and business have a duty to prevent harm to our waters.
- Land use planning is critical and protection of our waters should be of the highest priority.
- Government should be encouraged to support and fund efforts to preserve and enhance our water quality and the beauty of our area lakes.
- Citizens should be encouraged to participate to a greater level in issues affecting our waters.
- Governmental jurisdictional conflicts should not get in the way of doing what is right to preserve and enhance our waters and the natural beauty of our area lakes.
- The interests of lake property owners whose primary residence is elsewhere must be protected since they have no vote in local issues.
- Ordinances need to reflect a commitment to our water quality and the natural beauty of our area lakes and they need to be enforced.

The Sugar Lake Board voted to support the HOLCOLA with a \$100 donation for start up expenses.

# Picnic Recap

Over 200 member households out of a possible 364 were at the picnic. Total attendance was 710. The weather threatened with a few morning and evening showers but great weather during the picnic.



The picnic committee chair this year was Deb Beltrand pictured to the left. A large volunteer staff is needed before during and after the picnic. Thanks to Deb and all the volunteers who worked so hard to make the annual picnic a success.

Expenses were close to \$2,000. Raffle sales totaled more than \$5000. Raffle income was deposited in the milfoil and invasive species fund. This year we asked for extra donations for those who brought extra guests. The response to this request was welcomed.

Thanks to Karl Enghauser and his wife Enith for again hosting the picnic on their grounds. The picnic has been held at Enghauser's for over 30 years.

### Raffle winners were:

- 1st: Peter Ramme
- 2nd: Tom Michaud
- 3rd: Mike Gill (pictured to the left)

# Picnic



# Sugar Lake Board Election Results

The Annual Meeting and Board elections were held on August 18. The election committee consisted of Doc Williams and Gary Williamson

The results are:

### New Board Members

(Terms expire August 31, 2009)

- |                 |                  |
|-----------------|------------------|
| Rhonda Hiler    | Ed Quinn         |
| Rick Kanniainen | Greg Suddendorf  |
| Steve Mann      | Karen Sutherland |

### New officers for 2007/2008:

- Chairman:** Steve Wiltermuth  
**Vice-Chairman:** Steve Mann  
**Treasurer:** Lynne Bonine  
**Secretary:** Karen Sutherland

The membership also voted in favor of increasing dues to \$50 effective for the 2007—2008 fiscal year.

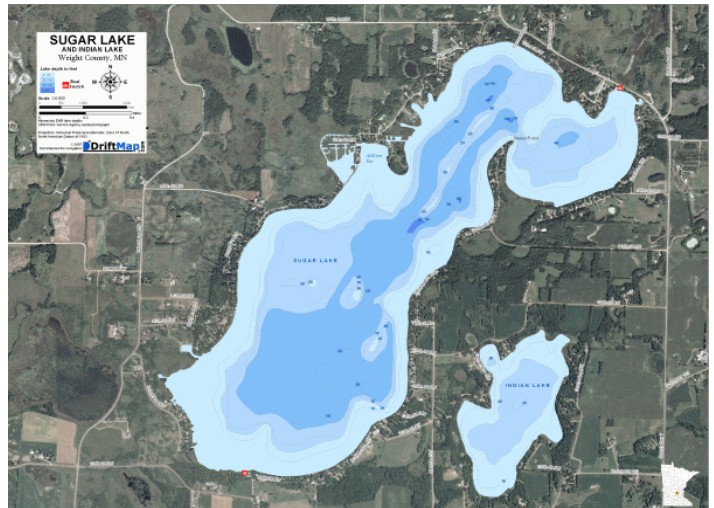
# Vegetation Report

Unfortunately we have more and larger areas of milfoil this year. A fall treatment is planned that other lakes have had success with. We are currently working with the DNR for permits to do this treatment.

# Maps

Thanks to all who bought the new **Sugar Lake Maps** at the picnic \$150.00 was raised for the Milfoil and Invasive Species Fund. If you missed them or want more, you can still order online at <http://sugarlake.driftmap.com> or contact Nathan Tift by phone (952-934-6689) or email ([nathan@driftmap.com](mailto:nathan@driftmap.com)). Maps include high quality aerial photography and color-coded lake depth contours for Sugar and Indian lakes. At 18x24 inches (a standard frame size) they cost \$29.95 each plus tax and shipping. Printed on durable vinyl they are ideal for hanging up at home or the cabin or even taking out on the lake. They also make for a great gift for anyone who loves Sugar Lake and are backed by **Drift-Map's** 100% satisfaction guarantee. If you order by September 30th, reference coupon code **SLA2007** to receive **\$5.00 off!**

# Picnic



## Lakescapers Social

The Lakescapers social was held Saturday, August 18, following the annual meeting. Despite the rain 24 Association members showed up at Peterson's for the event. Dale Gustafson spoke about shoreland landscaping, buffer strips, emergent vegetation



## Bulrush planting

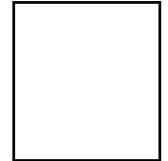
Saturday, August 25, the lakescapers will be planting bulrush at nine sites around the lake. Results from the planting last year are very encouraging.



planting, raingardens, and example projects around the lake. After lunch was served a smaller group went out on a pontoon for a "rainy" tour of some of the areas discussed.

---

The Sugar Lake Association  
The Sugar Lake News  
7630 106 St NW.  
Annandale, MN 55302



ADDRESS SERVICE REQUESTED